



EL SERIES

OWNER'S TECHNICAL MANUAL

HR90000 SERIES Spring Rewind Hose Reels

Description

The HR90000 Series of Spring Rewind Hose Reels are available in low, medium and high pressure. Medium pressure hose reels are supplied standard with S.A.E 100R1 at one wire braid hose suitable for diesel, air, water or oil application in auto and truck workshops. High pressure reels are supplied standard with S.A.E 100R2 at two wire braid hose suitable for grease applications. The adjustable arms allow for floor, wall or ceiling mounting according to needs. The hose reel drum is sturdy and practical with stiffening ribs and flange edges.

Specifications

Uses	Diesel, Air, Water, Oil, Fuel and Waste Oil
Working Pressures	300-4000psi
Materials	Steel / S.A.E 100R1, 100R2 and NBR hose



HR90005, HR90020, HR90035



HR90010, HR90025, HR90040, HR90050, HR90055, HR90060, HR90070



HR90015, HR90030, HR90045, HR90065, HR90075

HR90000 SERIES HOSE REELS

PART No.	PRODUCT DESCRIPTION	PSI/BAR
HR90005	EL Series Diesel, Air and Water complete with 30m x 1" ID hose and hose stop	300psi/20bar
HR90010	EL Series Diesel, Air and Water complete with 15m x 1" ID hose and hose stop	300psi/20bar
HR90015	EL Series Diesel, Air and Water complete with 8m x 1" ID hose and hose stop	300psi/20bar
HR90020	EL Series Diesel, Air and Water complete with 40m x 3/4" ID hose and hose stop	300psi/20bar
HR90025	EL Series Diesel, Air and Water complete with 20m x 3/4" ID hose and hose stop	300psi/20bar
HR90030	EL Series Diesel, Air and Water complete with 12m x 3/4" ID hose and hose stop	300psi/20bar
HR90035	EL Series Diesel, Air and Water complete with 50m x 1/2" ID hose and hose stop	300psi/20bar
HR90040	EL Series Diesel, Air and Water complete with 30m x 1/2" ID hose and hose stop	300psi/20bar
HR90045	EL Series Diesel, Air and Water complete with 25m x 1/2" ID hose and hose stop	300psi/20bar
HR90050	EL Series Oil, Fuel and Waste Oil complete with 15m x 1" ID hose and hose stop	1,000psi/69bar
HR90055	EL Series Oil, Fuel and Waste Oil complete with 20m x 3/4" ID hose and hose stop	1,250psi/86bar
HR90060	EL Series Diesel, Air and Water complete with 30m x 1/2" ID hose and hose stop	2,000psi/138bar
HR90065	EL Series Oil, Fuel and Waste Oil complete with 25m x 1/2" ID hose and hose stop	2,000psi/138bar
HR90070	EL Series Grease complete with 30m x 3/8" ID hose and hose stop	4,000psi/276bar
HR90075	EL Series Grease complete with 25m x 3/8" ID hose and hose stop	4,000psi/276bar

NSW

TEL: (02) 9677 1555
FAX: (02) 9675 1155

QLD / PNG

TEL: (07) 3204 9166
FAX: (07) 3204 1224

VIC / TAS

TEL: (03) 8787 8288
FAX: (03) 8787 8266

WA

TEL: (08) 9302 4199
FAX: (08) 9303 2095

SA / NT

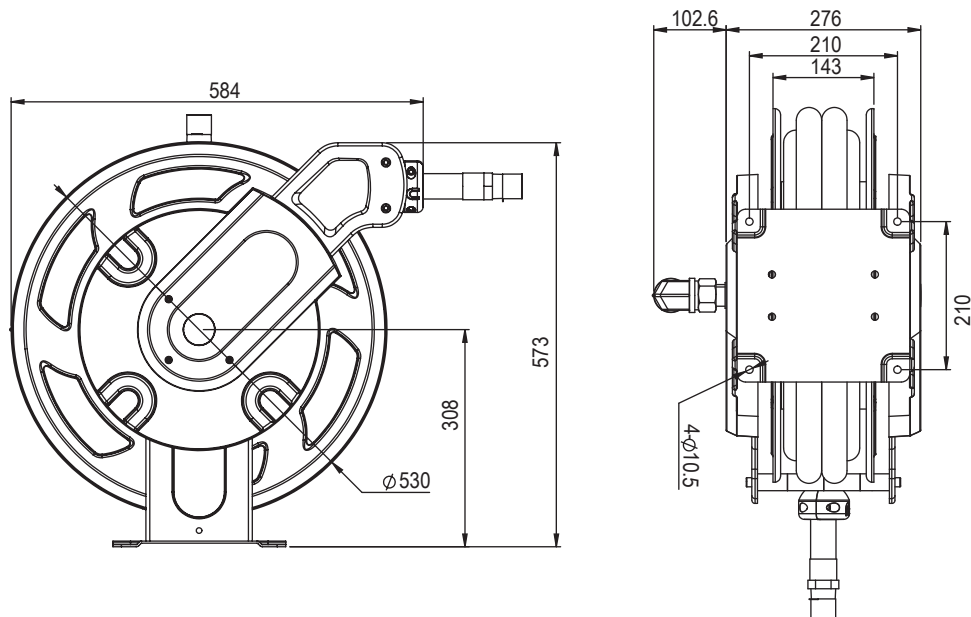
TEL: (08) 8241 7111
FAX: (08) 8241 7011

NZ

TEL: (64) 9 447 1007
FAX: (64) 9 447 1008



Parts and Drawing Breakdown for HR90015 / HR90030 / HR90045 / HR90065 / HR90075



Item	Max Pressure (psi/bar)	Hose Working Temperature (C)	Hose Working		
			Material	I.D. (inch/mm)	Length (m/ft)
HR90015	300/20	-20~+60	RUBBER	1" / 25	08 / 25
HR90030	300/20	-20~+60	RUBBER	3/4" / 19	12 / 40
HR90045	300/20	-20~+60	RUBBER	1/2" / 12	25 / 80
HR90065	2000/138	-40~+100	SAE100R1AT	1/2" / 12	25 / 80
HR90075	4000/275	-40~+100	SAE100R2AT	3/8" / 10	25 / 80

NSW

TEL: (02) 9677 1555
FAX: (02) 9675 1155

QLD / PNG

TEL: (07) 3204 9166
FAX: (07) 3204 1224

VIC / TAS

TEL: (03) 8787 8288
FAX: (03) 8787 8266

WA

TEL: (08) 9302 4199
FAX: (08) 9303 2095

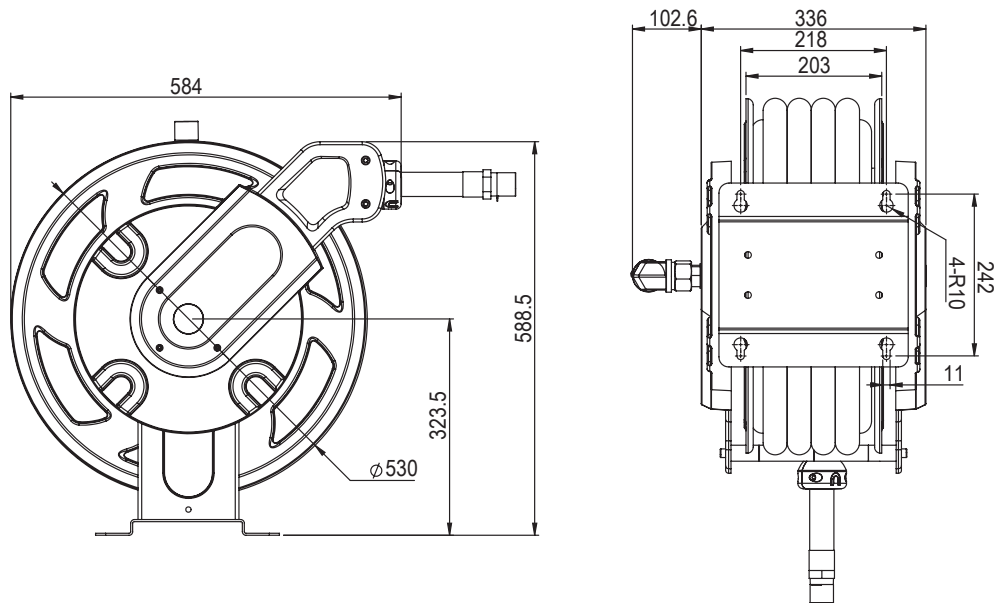
SA / NT

TEL: (08) 8241 7111
FAX: (08) 8241 7011

NZ

TEL: (64) 9 447 1007
FAX: (64) 9 447 1008

Parts and Drawing Breakdown for HR90010 / HR90025 / HR90040 / HR90050 / HR90055 HR90060 / HR90070



Item	Max Pressure (psi/bar)	Hose Working Temperature (C)	Hose Working		
			Material	I.D. (inch/mm)	Length (m/ft)
HR90010	300/20	-20~+60	RUBBER	1" / 25	15 / 50
HR90025	300/20	-20~+60	RUBBER	3/4" / 19	20 / 65
HR90040	300/20	-20~+60	RUBBER	1/2" / 12	30 / 100
HR90050	1000/70	-40~+100	SAE100R1AT	1" / 25	15 / 50
HR90055	1250/85	-40~+100	SAE100R1AT	3/4" / 19	20 / 65
HR90060	2000/138	-40~+100	SAE100R1AT	1/2" / 12	30 / 100
HR90070	4000/276	-40~+100	SAE100R2AT	3/8" / 10	30 / 100

NSW

TEL: (02) 9677 1555
FAX: (02) 9675 1155

QLD / PNG

TEL: (07) 3204 9166
FAX: (07) 3204 1224

VIC / TAS

TEL: (03) 8787 8288
FAX: (03) 8787 8266

WA

TEL: (08) 9302 4199
FAX: (08) 9303 2095

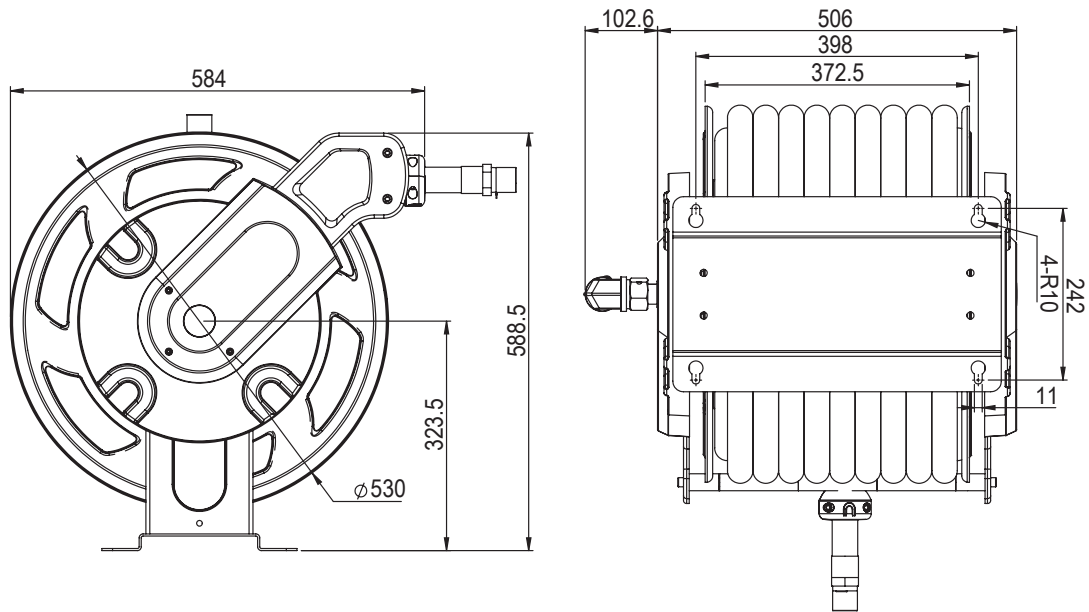
SA / NT

TEL: (08) 8241 7111
FAX: (08) 8241 7011

NZ

TEL: (64) 9 447 1007
FAX: (64) 9 447 1008

Parts and Drawing Breakdown for HR90005 / HR90020 / HR90035



Item	Max Pressure (psi/bar)	Hose Working Temperature (C)	Hose Working		
			Material	I.D. (inch/mm)	Length (m/ft)
HR90005	300/20	-20~+60	RUBBER	1" / 25	30 / 100
HR90020	300/20	-20~+60	RUBBER	3/4" / 19	40 / 130
HR90035	300/20	-20~+60	RUBBER	1/2" / 12	50 / 160

NSW

TEL: (02) 9677 1555
FAX: (02) 9675 1155

QLD / PNG

TEL: (07) 3204 9166
FAX: (07) 3204 1224

VIC / TAS

TEL: (03) 8787 8288
FAX: (03) 8787 8266

WA

TEL: (08) 9302 4199
FAX: (08) 9303 2095

SA / NT

TEL: (08) 8241 7111
FAX: (08) 8241 7011

NZ

TEL: (64) 9 447 1007
FAX: (64) 9 447 1008

Parts and Drawing Instructions for HR90000 Series

Specifications

Spring driven drum: for automatic rewind.

Locking ratchet: to maintain the desired length of hose in use.

Read the following precautions and instructions before you begin assembly or using. Failure to comply with these instructions could result in personal injury or property damage. Keep these instructions in a convenient location for future reference.

Hose Reel Safety Precautions

1. Make sure incoming line pressure does not exceed rated operating pressure for your model hose reel.
2. Use proper eye protection when assembling and using the hose reel.
3. Assemble the hose reel on a clean workbench.
4. Use soap and water when checking for leaks.
5. Keep children away from the work area.



WARNING:

Exposure of skin directly to pressurized air, or fluid could result in severe bodily injury.

Installation of Reel

- 1) For overhead ceiling mounting: Install reels at least 16.5 feet above the floor.
- 2) If the reel you have purchased does not have hose included, you will need to purchase and attach. Refer to Specifications on box to determine appropriate hose size and length.
- 3) You will need to purchase appropriate hardware for mounting your new reel.
 1. The reel base has four 1/2" (or 12.7mm) drilled holes for mounting on a suitable flat surface. Figure 2 is a template showing the correct location of the 4 mounting holes in the base
 2. The reel is supplied with a hose guide roller bracket. The bracket position may be changed depending on the reel mounting position. Figure 2 shows "Typical Mounting Positions". If bracket position needs to be changed, do the following:
 - (1) Pull out some hose and let reel latch.
 - (2) Remove the bolts that attach the guide roller bracket to the support post.
 - (3) Rotate guide roller bracket to correct position, replace bolts and tighten.
3. Using the four holes in the base, mount the reel in the desired location. Be sure to use appropriate hardware and tighten securely.
4. Apply Teflon tape or pipe sealant to supply line threads, attach to reel inlet and tighten. The other end of incoming line can now be connected to desired supply source.
5. If hose has been supplied with reel: Apply Teflon tape or pipe sealant to outlet fitting on reel hose, then attach to desired tool, or nozzle. Check connection for leakage, also check hose reel for correct operation. (Details see Operation section.)
6. If hose stopper adjustment is required, pull hose from reel and allow to latch at desired length. Loosen stopper bolts and slide stopper to a position close to the hose guide. Tighten stopper bolts, and unlatch the reel.

Installation of Hose

1. Securely stabilize the reel.
2. Facing the swivel fitting side of reel: Turn the drum clockwise, by hand, until the rewind spring is tight, and drum has latched. As an extra precaution while installing new hose, secure drum in the latched position.

NSW

TEL: (02) 9677 1555
FAX: (02) 9675 1155

QLD / PNG

TEL: (07) 3204 9166
FAX: (07) 3204 1224

VIC / TAS

TEL: (03) 8787 8288
FAX: (03) 8787 8266

WA

TEL: (08) 9302 4199
FAX: (08) 9303 2095

SA / NT

TEL: (08) 8241 7111
FAX: (08) 8241 7011

NZ

TEL: (64) 9 447 1007
FAX: (64) 9 447 1008

Parts and Drawing Instructions for HR90000 Series

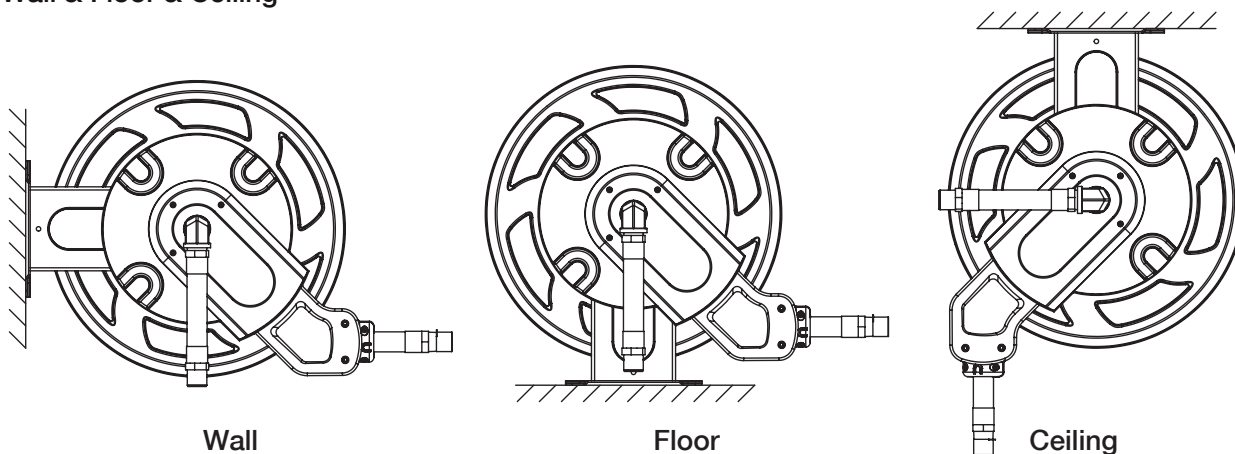
3. Insert end of the hose through guide roller bracket, and feed through the opening in the drum flange.
4. Use Teflon tape or pipe sealant on hose fitting threads, screw fitting into swivel and tighten.
Note: To avoid damage to the swivel, use a wrench to support the swivel fitting while tightening the hose.
5. Attach hose stopper on the other end of hose, near the outlet fitting.
6. Carefully release drum latch, and slowly allow hose to wind onto the reel.

Note: Final spring tension adjustment is accomplished by adding wraps of hose around the drum (to increase tension) or taking off wraps of hose (to decrease tension). Refer to: Adjustment of Spring Tension.

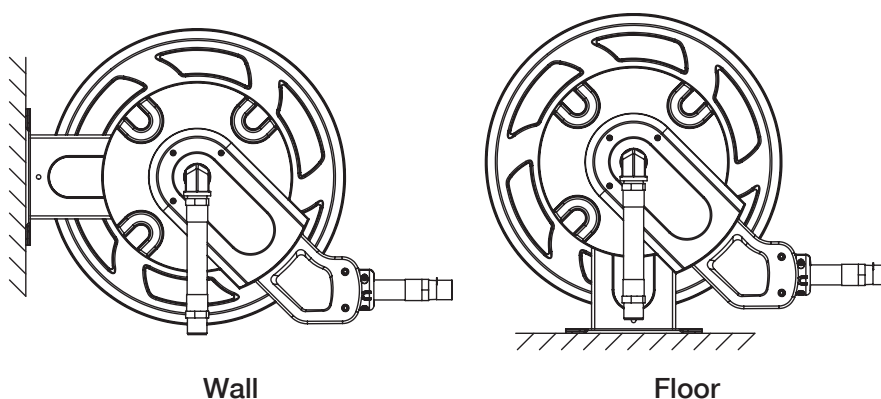
HR90015 / HR90030 / HR90045 / HR90065 / HR90075

& HR90010 / HR90025 / HR90040 / HR90050 / HR90055 / HR90060 / HR90070

Wall & Floor & Ceiling



HR90005 / HR90020 / HR90035 Wall & Floor



NSW

TEL: (02) 9677 1555
FAX: (02) 9675 1155

QLD / PNG

TEL: (07) 3204 9166
FAX: (07) 3204 1224

VIC / TAS

TEL: (03) 8787 8288
FAX: (03) 8787 8266

WA

TEL: (08) 9302 4199
FAX: (08) 9303 2095

SA / NT

TEL: (08) 8241 7111
FAX: (08) 8241 7011

NZ

TEL: (64) 9 447 1007
FAX: (64) 9 447 1008

Operational Instructions for HR90000 Series

Operation

1. Check reel for correct operation by slowly pulling out the hose. A “clicking” noise will be heard every half revolution of the drum.
2. To latch the reel, pull out the hose and allow it to retract after hearing the first second or third “click”.
3. To unlatch, slowly pull out the hose until the “clicking” noise stops, then let the hose retract until the hose stop rests against the hose guide. Note: To avoid damage to the reel, always hold on to the hose while it is rewinding.
4. Periodically check the hose condition for wear or damage, and check the swivel fitting for leakage. Replace any worn, damaged, or leaking parts.

Adjustment of Spring Tension

1. Pull out approximately 6ft or 2m of hose and allow the drum to latch.
2. Remove hose stopper from hose, and feed hose back through guide.
3. Wrap the pulled hose one time around the drum to increase tension or un-wrap hose one time from drum to decrease tension.
4. Re-insert hose through guide, and install stopper onto hose end.
5. Unlatch the Drum and check tension. Pull hose from reel, and adjust stopper position if necessary.

Replacement of Hose

1. Turn off supply to reel.
2. Pull out all the old hose and lock the reel in this position. Caution: Make sure reel drum is securely locked and cannot rotate back.
3. Remove two hose clamps from hose.
4. Carefully disconnect hose from swivel joint on side of reel, or male fitting in axle center and remove old hose.
5. Feed new hose through guide and opening in drum, and connect to swivel. Re-install two hose clamps, on inside and outside of drum flange. Install stopper on other end of hose in the same position as before.
6. Carefully release the drum latch, and slowly allow the hose to wind onto the reel. Note: Final spring adjustment is accomplished by adding or removing wraps of hose around the drum. (Details see spring tension adjustment).

Spring Canister Warning

If the rewind spring fails for any reason: For safety reasons, the manufacturer strongly recommends the replacement of the spring canister be carried out by a professional mechanic.

Limited Warranty

1. The manufacturer warrants this hose reel against defects in material and craftsmanship, for a period of 12 months from date of purchase.
2. Hose, if supplied with reel, O-rings, plastic rollers and rubber stopper are deemed to be normal wear items; not warranted.
3. Manufacturer's liability is limited to replacement or repair of defective material within the warranty period, when returned freight prepaid to the distributor or their designated service depot.
4. The warranty does not cover damage caused by accident, misuse or faulty installation.
5. The reel must be installed and maintained in compliance with the instructions.

NSW

TEL: (02) 9677 1555
FAX: (02) 9675 1155

QLD / PNG

TEL: (07) 3204 9166
FAX: (07) 3204 1224

VIC / TAS

TEL: (03) 8787 8288
FAX: (03) 8787 8266

WA

TEL: (08) 9302 4199
FAX: (08) 9303 2095

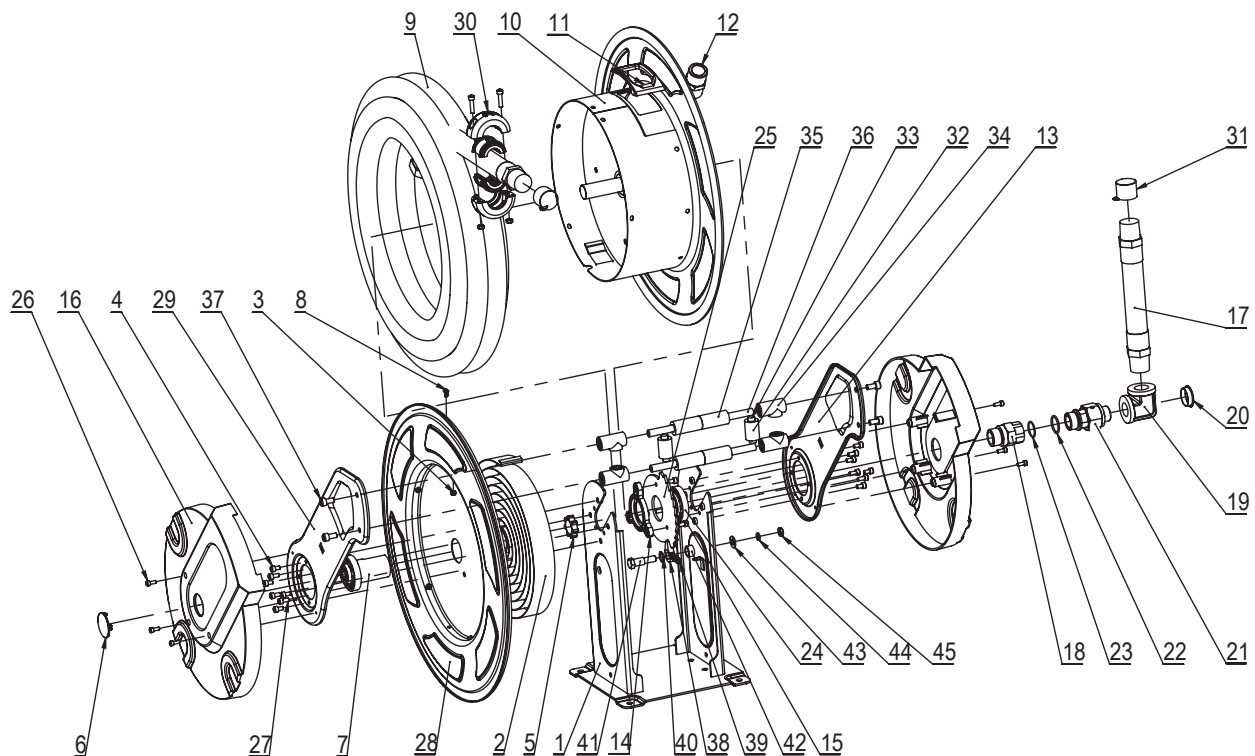
SA / NT

TEL: (08) 8241 7111
FAX: (08) 8241 7011

NZ

TEL: (64) 9 447 1007
FAX: (64) 9 447 1008

Exploded and Parts List for HR90015, HR90030, HR90045, HR90065 HR90075



Part No.	Description	Q'ty	Part No.	Description	Q'ty
1	Base Assembly	1	24	Axle Sleeve	1
2	Spring	1	25	Locking Ring	1
3	Nut	6	26	Screw	6
4	Screw	8	27	Screw	6
5	Axle Sleeve	1	28	Drum 1	1
6	Protection Cover	1	29	Support Plate 1	1
7	Spring Core	1	30	Bumper Block	1
8	Screw	6	31	Thread protector	2
9	Hose Assembly	1	32	Roller	2
10	Drum Assembly	1	33	Roller Axle	2
11	Protection Base	1	34	Roller Base	4
12	Fitting	1	35	Roller	4
13	Support plate 2	1	36	Roller Axle	2
14	Locking Ring Gasket	1	37	Screw	4
15	Screw	3	38	Ratchet	1
16	End Cap	2	39	Ratchet Sprng	1
17	Hose Assembly	1	40	Washer	1
18	Convert Fitting	1	41	Bolt	1
19	Fitting	1	42	Washer	1
20	Thread protector	1	43	Washer	1
21	Valve Assembly	1	44	Ball	1
22	O-Ring	1	45	Nut	1
23	O-Ring	1			

NSW
TEL: (02) 9677 1555
FAX: (02) 9675 1155

QLD / PNG
TEL: (07) 3204 9166
FAX: (07) 3204 1224

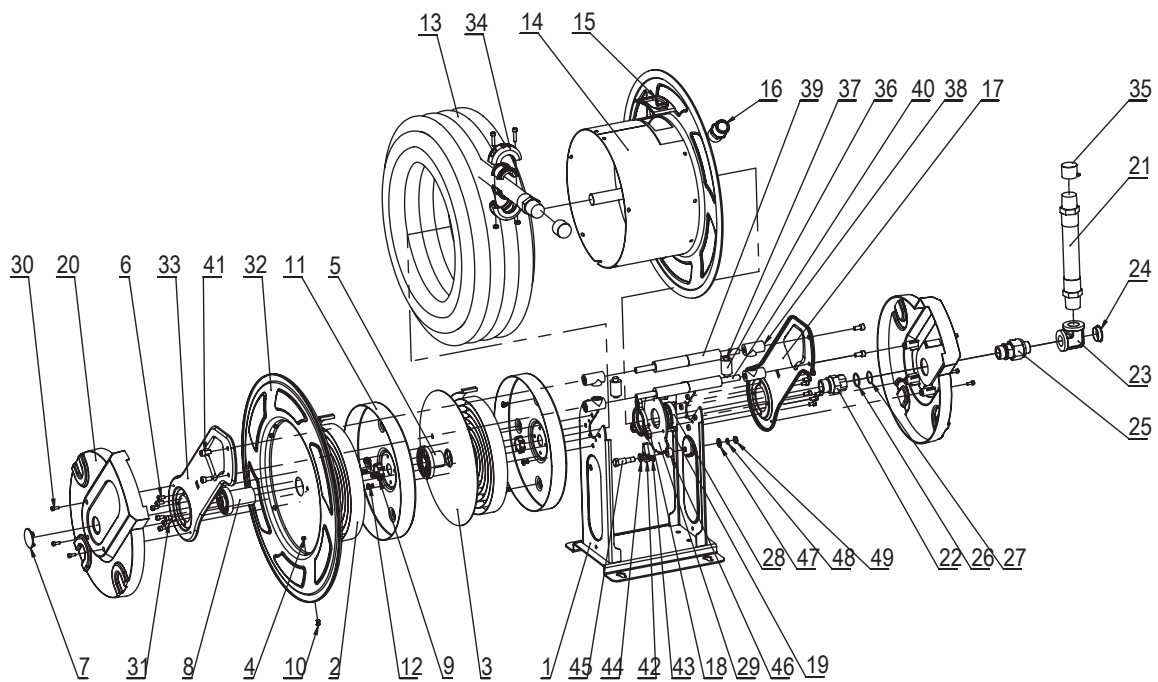
VIC / TAS
TEL: (03) 8787 8288
FAX: (03) 8787 8266

WA
TEL: (08) 9302 4199
FAX: (08) 9303 2095

SA / NT
TEL: (08) 8241 7111
FAX: (08) 8241 7011

NZ
TEL: (64) 9 447 1007
FAX: (64) 9 447 1008

Exploded and Parts List for HR90010, HR90025, HR90040, HR90050, HR90055, HR90060, HR90070



Part No.	Description	Q'ty	Part No.	Description	Q'ty
1	Base Assembly	1	26	O-Ring	1
2	Spring	2	27	O-Ring	1
3	Spring Drum Cover	1	28	Axle Sleeve	1
4	Nut	6	29	Locking Ring	1
5	Spring Core	1	30	Screw	6
6	Screw	8	31	Screw	6
7	Protection Cover	1	32	Drum 1	1
8	Spring Core	1	33	Support Plate 1	1
9	Axle Sleeve	2	34	Bumper Block	1
10	Screw	6	35	Thread protector	2
11	Spring Drum Assembly	2	36	Roller	2
12	Screw	8	37	Roller Axle	2
13	Hose Assembly	1	38	Roller Base	4
14	Drum Assembly	1	39	Roller	4
15	Protection Base	1	40	Roller Axle	2
16	Fitting	1	41	Screw	4
17	Support plate 2	1	42	Ratchet	1
18	Locking Ring Gasket	1	43	Ratchet Spring	1
19	Screw	3	44	Washer	1
20	End Cap	2	45	Bolt	1
21	Hose Assembly	1	46	Washer	1
22	Convert Fitting	1	47	Washer	1
23	Fitting	1	48	Ball	1
24	Thread protector	1	49	Nut	1
25	Valve Assembly	1			

NSW
TEL: (02) 9677 1555
FAX: (02) 9675 1155

QLD / PNG
TEL: (07) 3204 9166
FAX: (07) 3204 1224

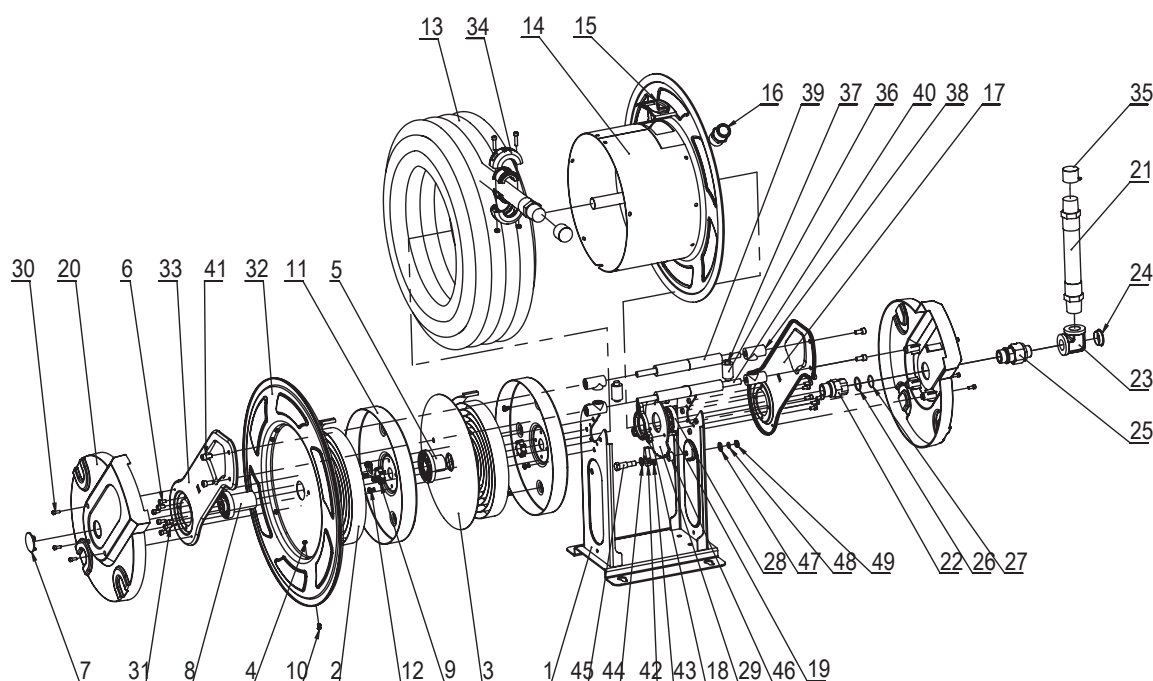
VIC / TAS
TEL: (03) 8787 8288
FAX: (03) 8787 8266

WA
TEL: (08) 9302 4199
FAX: (08) 9303 2095

SA / NT
TEL: (08) 8241 7111
FAX: (08) 8241 7011

NZ
TEL: (64) 9 447 1007
FAX: (64) 9 447 1008

Exploded and Parts List for HR90005, HR90020, HR90035



Part No.	Description	Q'ty	Part No.	Description	Q'ty
1	Base Assembly	1	26	O-Ring	1
2	Spring	2	27	O-Ring	1
3	Spring Drum Cover	1	28	Axle Sleeve	1
4	Nut	6	29	Locking Ring	1
5	Spring Core	1	30	Screw	6
6	Screw	8	31	Screw	6
7	Protection Cover	1	32	Drum 1	1
8	Spring Core	1	33	Support Plate 1	1
9	Axle Sleeve	2	34	Bumper Block	1
10	Screw	6	35	Thread protector	2
11	Spring Drum Assembly	2	36	Roller	2
12	Screw	8	37	Roller Axle	2
13	Hose Assembly	1	38	Roller Base	4
14	Drum Assembly	1	39	Roller	4
15	Protection Base	1	40	Roller Axle	2
16	Fitting	1	41	Screw	4
17	Support plate 2	1	42	Ratchet	1
18	Locking Ring Gasket	1	43	Ratchet Spring	1
19	Screw	3	44	Washer	1
20	End Cap	2	45	Bolt	1
21	Hose Assembly	1	46	Washer	1
22	Convert Fitting	1	47	Washer	1
23	Fitting	1	48	Ball	1
24	Thread protector	1	49	Nut	1
25	Valve Assembly	1			

NSW

TEL: (02) 9677 1555
FAX: (02) 9675 1155

QLD / PNG

TEL: (07) 3204 9166
FAX: (07) 3204 1224

VIC / TAS

TEL: (03) 8787 8288
FAX: (03) 8787 8266

WA

TEL: (08) 9302 4199
FAX: (08) 9303 2095

SA / NT

TEL: (08) 8241 7111
FAX: (08) 8241 7011

NZ

TEL: (64) 9 447 1007
FAX: (64) 9 447 1008