

## Foldable LED Work Light

### DESCRIPTION

The 20066N Foldable LED Work Light is the ideal portable workshop light due to its low heat output, stronger brightness, high shock resistant TPR housing, 3W high power super bright COB LED for large area light emission and one spot LED on the top.

A major advantage of the 20066N Foldable LED Work Light is the 150° folding design offering the ultimate in flexible positioning and convenience for hands free-use when using with the additional benefits of a magnetic base and a 360° fold away hanging hook to increase the application possibilities.

### SPECIFICATIONS

Materials	Durable shock and weather resistant TPR housing. Anti-impact high transparency polycarbonate lens	
Battery	2000mAh	
Charging System	Input: 100-240VAC	Output: 5VDC
Charging Time	3 hours	
Operation Time	3 hours after full charge	
LED	1*3W COB main light and 1W head light	
Power Supply Type	Rechargeable	

### Features

1. High Capacity lithium battery for long time operation
2. Strong PC lens and ruberised housing finish handle grip
3. Strong magnetic for hand-free application
4. Strong light output around 200 Lumens
5. Comes with a integral hook and straight charge
6. 1W head lamp
7. 150° fold away from frame
8. Rechargeable

### Battery treatment / charging

- 3 indicators are positioned underneath the COB LED:
- 1 RED in the middle and a GREEN on either side
- When power is low the RED indicator is lit
- When charging, RED is lit and turns into the GREEN when fully charged
- Do not leave battery in full discharge condition.
- Recharge the work light at least once in every 30 days

### Warning & safety Issues

Red indicator constantly on when the light is on:  
It is time for charging.

Avoid looking directly into the beam

Do not use the lamp near open flames



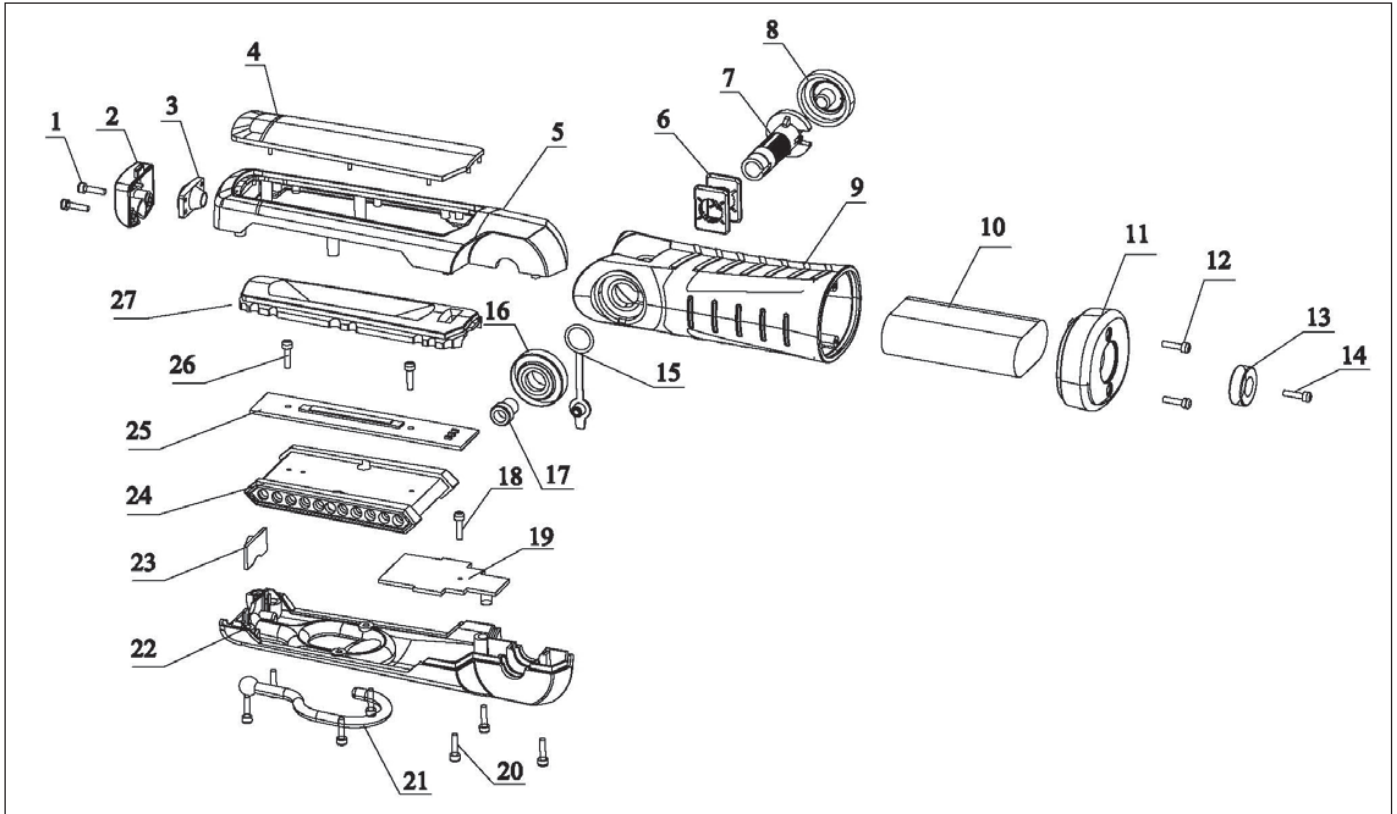
AC Charger



Car Charger



## 20066N EXPLODED DIAGRAM



## 20066N PARTS LIST

NO.	DESCRIPTION	QTY	NO.	DESCRIPTION	QTY
20066N 1	Platen Screw	2	20066N 15	The Seals for Charging Hole	1
20066N 2	Hook Platen	1	20066N 16	Rotation Cover	1
20066N 3	Spot Light Transparent Cover and Reflector	1	20066N 17	DC Socket	1
20066N 4	Mainbody Transparent Cover	1	20066N 18	PCB Screw	1
20066N 5	Mainbody Upper Cover	1	20066N 19	PCB	1
20066N 6	Rotation Locator	2	20066N 20	Body Screw	7
20066N 7	Rotation Axis	1	20066N 21	Hook	1
20066N 8	Rotation Axis Cover	1	20066N 22	Mainbody Lower Cover	1
20066N 9	Handle	1	20066N 23	Spot Light PCB	1
20066N 10	Battery	1	20066N 24	Cooling Block	1
20066N 11	Bottom Cover	1	20066N 25	LED Light Plate	1
20066N 12	Bottom Cover Screw	2	20066N 26	PCB Screw	2
20066N 13	Magnet	1	20066N 27	Mainbody Reflector	1
20066N 14	Magnet Screw	1			

NSW/ACT  
TEL: (02) 9677 1555  
FAX: (02) 9675 1155

QLD/PNG  
TEL: (07) 3204 9166  
FAX: (07) 3204 1224

VIC/TAS  
TEL: (03) 8787 8288  
FAX: (03) 8787 8266

WA  
TEL: (08) 9302 4199  
FAX: (08) 9303 2095

SA/NT  
TEL: (08) 8241 7111  
FAX: (08) 8241 7011

NZ  
TEL: (64) 9 447 1007  
FAX: (64) 9 447 1008

