

## PRODUCT INFORMATION

January 2018



# SJ-520-001

## Stackable 2,000L IBC Spill Container

The new SJ-520-001 **stackable** 2,000L IBC spill container is an innovative, space saving design that efficiently stacks multiple units to ultimately minimise transport costs and space on your floor or storage system. Whether you stack for example six or eight units, you only occupy the space of one SJ-520-001 **stackable** 2,000 IBC spill container.

Up to four times the number of units can be stored and shipped in a container. 64 complete SJ-520-001 **stackable** 2,000L IBC spill containers in a 40' container and 24 in a 20' container, dramatically reducing freight costs.

Manufactured from 100% recyclable polyethylene the SJ-520-001 with its platform and supports has been load weight & hydrostatic tested, has a capacity of 1,200 litres (1,165 litres to underside of the deck), features a non-skid removable deck inclusive of hand inserts for ease of lifting in addition to multiple holes for inspection and pump insertion.

Designed for static spill containment, the SJ-520-001 2,000L IBC **stackable** spill container is compatible with most forklifts and pallet trucks, provides excellent chemical resistance and is UV stabilised.

For your information, it is recommended that an IBC is removed from the SJ-520-001 2,000L IBC **stackable** spill container prior to moving the spill container to a different location.



IBCs not included

### PRODUCT SPECIFICATIONS, FEATURES AND BENEFITS

Innovative and efficient stacking and storage ability

Significantly reduces transport costs

100% recyclable polyethylene construction

Low height for ease of use (575mm)

Non-skid removable deck

Spill container only to be used with deck and supports in place

Deck incorporates hand inserts and holes for inspection and pump insertion

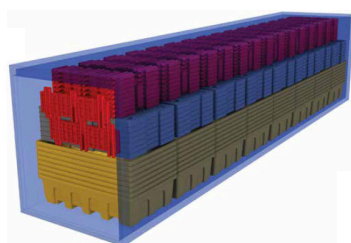
Compatible with most forklifts and pallet trucks, use extensions when needed

Remove IBC and empty spill container before moving

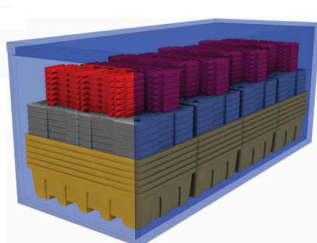
Capacity of 1,165 litres to underside of the deck

Fully recyclable, chemical resistant, UV stabilised PE

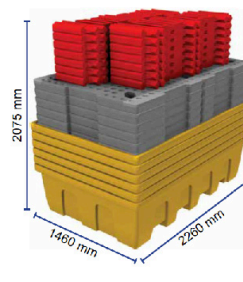
Dimensions: 575mm (H) x 2260mm (W) x 1460mm (D)



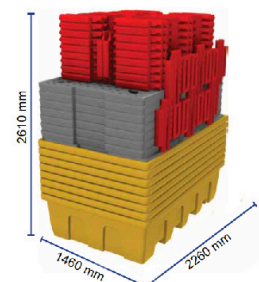
64 units in a 40' Container



24 units in a 20' Container



6 complete SJ-520-001 units



8 complete SJ-520-001 units

### ORDERING INFORMATION

**SJ-520-001** 2,000L IBC Spill Container

