

Description

The 6820HDN 68L mobile diesel transfer tank with rotary vane pump and nozzle and the 6820HDS 68L mobile diesel transfer tank with rotary vane pump and spout are ideal for transporting diesel to perform refuelling of small vehicles, workshop & farm equipment, agricultural/landscaping tools and recreational vehicles or crafts.

Featuring a unique design with ergonomic grip for ease of handling and lifting, the tank is equipped with solid 8" PU wheels suitable for mobility on any surface.

The tank is manufactured in roto-molded linear polyethylene, is impact resistant, UV stabilised and fitted with a filling plug complete with integrated air vent device and a lower safety tap.

Supplied standard with a manual rotary vane pump (flow rates of up to 20L/min), manual nozzle (6820HDN) or spout (6820HDS) and 3m of delivery hose.

Features

Product No's	6820HDN / 6820HDS
Tank capacity	68 litres
Vented plug	2"
Wheel PU - dia	200 mm
Aluminium pump	Free flow rate 20 L/min
Earth wire with pliers	1000 mm
Hose delivery 3/4"	4000 mm
F20040 nozzle (6820HDN)	Aluminium
Spout (6820HDS)	150 mm
Height	960 mm
Width	480 mm
Depth	380 mm
Test pressure	43.5psi (3bar)
Weight	11 kg
Packaging dimensions H x L x P	980 x 500 x 400 mm



Warning

Read carefully and understand all instructions before operating. Failure to follow the safety rules and other basic precautions may result in serious personal injury. Save these instructions in a safe place and on hand for reference and to assist in servicing.

We recommend to keep a copy of your invoice with this manual.

Safety

1. Keep your working area clean
2. Check all components of your machine before using (pump-hose)
3. Only use original spare parts
4. Don't try to dismantle by yourself. Warranty would be invalid, keep in touch with your distributor

Safety precautions

This tank is highly recommended to store or distribute gasoline or flammable products according the ADR rules and the aluminium pump with Viton seals

1. Only use the device for the purpose for which it has been designed
2. Work in an open and dry space area
3. Do not expose the tank to any source of heat
4. While working, wear gloves and glasses for personal safety
5. This device has been factory inspected. Do not modify any component of the equipment
6. Our technical office is at your disposal for any information you may need



Assembly and operating

Step 1: Attach the delivery hose with spout to the outlet of the pump using the Teflon tape.

Step 2: Unscrew the vented plug (21) and fill the tank in standing or laying position.
Screw the vented plug, your device is ready to work.

Step 3: Turn on the rotary pump level to prime the pump. Take care about the delivery hose which should be secure before delivery to avoid any soiling.

Warranty

Alemlube warrants this product against defects in material and craftsmanship, for a period of two years from date of purchase. (Not including wearing parts).

Alemlube's liability is limited to replacement or repair of defective material within the warranty period.

The warranty does not cover damage caused by accident, misuse or faulty installation.

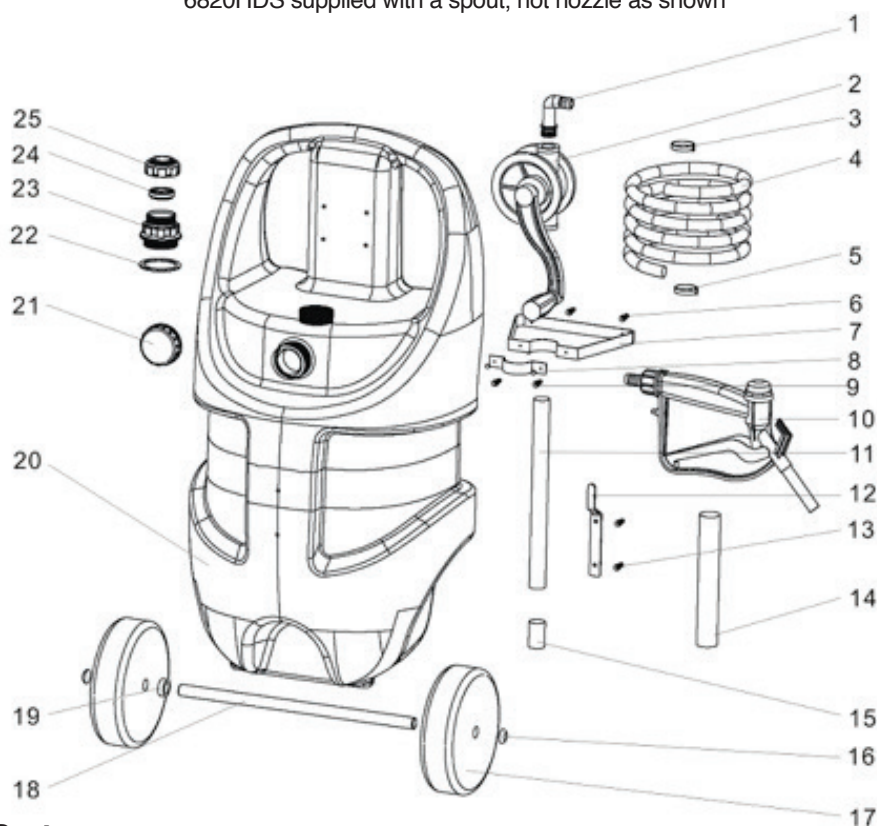
The product must be used and maintained in compliance with the instructions.

Freight

As soon as you received your tank, please assure that no parts is missing or broken. If yes feel free to contact immediately your distributor.

Parts and Drawing Breakdown for the 6820HDN

6820HDS supplied with a spout, not nozzle as shown



Ordering Spare Parts

Parts List – Product No's. 6820HDN and 6820HDS

Please quote prefix 6820HDN or 6820HDS product number when ordering

Product No.	Description	Q/ty
6820HDN-1	Pump elbow	1
6820HDN-2	Rotary pump	1
6820HDN-3	Clamp	1
6820HDN-4	Delivery hose	1
6820HDN-5	Clamp	1
6820HDN-6	Screw	2
6820HDN-7	Pump bracket-base	1
6820HDN-8	Pump bracket-ring	1

Product No.	Description	Q/ty
6820HDN-10	Manual Nozzle	1
6820HDN-11	Pump tube	1
6820HDN-12	Nozzle hook	1
6820HDN-13	Screw	2
6820HDN-14	Spout with plug	1
6820HDN-15	Filter	1
6820HDN-16	Wheel cap	2
6820HDN-17	Wheel	2

Product No.	Description	Q/ty
6820HDN-19	Wheel washer	2
6820HDN-20	Tank	1
6820HDN-21	Vent plug	1
6820HDN-22	Sealing	1
6820HDN-23	Tank adaptor	1
6820HDN-24	U-Sealing	1
6820HDN-25	Tank adaptor cover	1

NSW/ACT

TEL: (02) 9677 1555
FAX: (02) 9675 1155

QLD/PNG

TEL: (07) 3204 9166
FAX: (07) 3204 1224

VIC/TAS

TEL: (03) 8787 8288
FAX: (03) 8787 8266

WA

TEL: (08) 9302 4199
FAX: (08) 9303 2095

SA/NT

TEL: (08) 8241 7111
FAX: (08) 8241 7011

NZ

TEL: (64) 9 447 1007
FAX: (64) 9 447 1008