

### Description

The 733 stainless steel drum pump is a manually operated drum pump designed specifically for the transfer of Chemicals and Solvents from 60 Litre or 205 Litre Drums. The pump is made of stainless steel and Teflon components for exceptional chemical resistance and as such can also be used for food grade applications. It is lightweight at only 3.0kgs and has an adjustable discharge spout. There are no aluminium parts which makes this pump suitable for use in underground mines. The 733 can transfer liquids at a rate of 20 Litres per minute.

NOTE: Always consult Alemlube to check chemical compatibility prior to using this pump.

### Specifications

Suitable for:	Acids, alkalis, ink, herbicides, pesticides, chemicals and solvents from 60 or 205L drums
Discharge Quantity:	Up to 500mL litres per stroke / 20L/min. Suitable for liquids up to 2000 SSU viscosity
Materials:	304 Stainless steel and Teflon wetted parts
Weight:	3.0kgs
Bung Adaptor:	2" BSP standard bung adaptor. Others available
Outlet Thread:	3/4" BSP

### Operating Instructions

- 1 Lift the T handle 3 or 4 times and then the pump is primed and ready to operate.
- 2 When you are finished transferring the chemical, solvent or acid being pumped, please ensure that all fluid is dispensed from the pump otherwise the fluid may set in the pump or may attach the Teflon seals within the pump.
- 3 When you lift the T handle and piston rod, the pump is being primed and when you push down on the T handle, the fluid within the pump will be dispensed.
- 4 The 733 stainless steel drum pump has a flapper valve at the bottom of the pump and it is this valve that enables the pump to transfer fluid. If the pump fails to transfer fluid most likely you will require a new flapper valve Part No. 733-12.
- 5 Other packings including Part No's 733-12, 733-4 and 733-7 may also need replacing over time.

Thank you for choosing to use an Alemlube product for your transfer needs and should you have any questions in regard to the assembly or operation of your new Alemlube 733 push pull action chemical & solvent transfer drum pump we look forward to hearing from you on the appropriate state phone no below



NSW/ACT  
TEL: (02) 9677 1555  
FAX: (02) 9675 1155

QLD/PNG  
TEL: (07) 3204 9166  
FAX: (07) 3204 1224

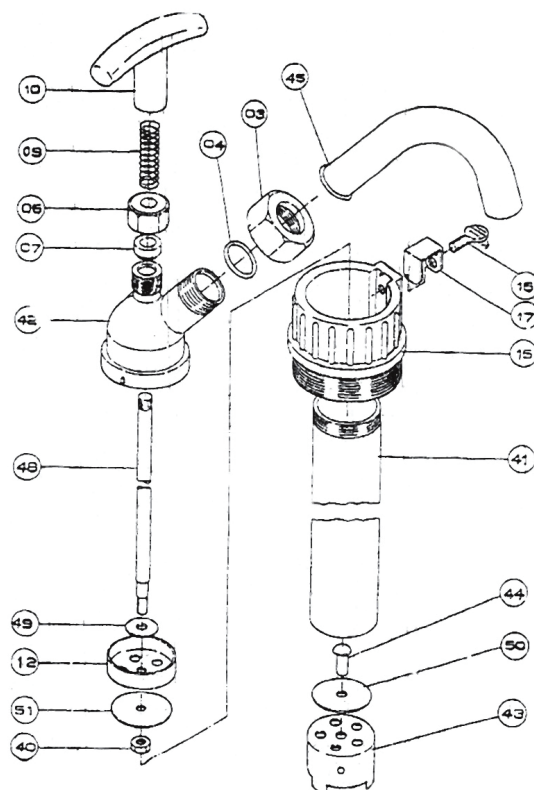
VIC/TAS  
TEL: (03) 8787 8288  
FAX: (03) 8787 8266

WA  
TEL: (08) 9302 4199  
FAX: (08) 9303 2095

SA/NT  
TEL: (08) 8241 7111  
FAX: (08) 8241 7011

NZ  
TEL: (09) 447 1007  
FAX: (09) 447 1008

# Parts and Drawing Breakdown 773



## Ordering Spare Parts Parts List – Part No. 733

Item No.	Part No.	Description	Material	Qty
3	733-3	Coupling Nut	304SS	1
4	733-4	Spout Seal	Teflon	1
6	733-6	Packing nut	304SS	1
7	733-7	Packing	Teflon	1
9	733-9	Spring	SS41	1
10	733-10	Handle	Nylon	1
12	733-12	Upper Piston	Teflon	1
15	733-15	Adaptor	Polypropylene	1
16	733-16	Screw	SS41	1
17	733-17	Safety Plate	SS41	1
15,16,17	733-15,16,17	Adaptor complete	Polypropylene /SS41	1
40	733-40	Hex Nut	304SS	1
41	733-41	Cylinder Body	316SS	1
42	733-42	Cylinder Cap	304SS	1
43	733-43	Lower Piston	304SS	1
44	733-44	Rivet	304SS	1
45	733-45	Spout	304SS	1
48	733-48	Piston Rod	304SS	1
49	733-49	Upper Piston Washer	304SS	1
50	733-50	Piston Washer	304SS	1
51	733-51	Piston Washer	304SS	1

## Trouble Shooting

PROBLEM	REASON	REMEDY
Pump will not prime	Faulty flapper valve (733-12)	Replace flapper valve
Pump leaking	Faulty rod packing (733-7)	Replace rod packing
Pump will not connect to drum	Non standard drum	Contact local distributor and discuss the issue with him (Mauser type or Trisure buttress bung adaptor required)

NSW/ACT  
TEL: (02) 9677 1555  
FAX: (02) 9675 1155

QLD/PNG  
TEL: (07) 3204 9166  
FAX: (07) 3204 1224

VIC/TAS  
TEL: (03) 8787 8288  
FAX: (03) 8787 8266

WA  
TEL: (08) 9302 4199  
FAX: (08) 9303 2095

SA/NT  
TEL: (08) 8241 7111  
FAX: (08) 8241 7011

NZ  
TEL: (09) 447 1007  
FAX: (09) 447 1008