

Description

The 30080 is a mobile waste oil drainer designed to safely and efficiently capture the oil from engine crankcases, transmissions and differentials, which can then be emptied with the aid of air pressure. The oil level gauge located on the side of the reservoir indicates the quantity of oil drained. Always avoid closing the bleeder vent on the catch-basin to the reservoir connecting tube while draining.

Specifications

Function	Collect waste oil from vehicle gear box or engine
Power	Compressed air
Air Consumption	200L/min
Air Inlet Pressure (Oil Ejection Pressure)	87~116psi
Tank Capacity	80L
Collect Tray Capacity	20L
Height	1280mm~1890mm

WARNING

READ AND UNDERSTAND ALL INSTRUCTIONS.

Failure to follow all instructions listed below may result in electric shock, fire, and/or serious injury.

SAVE THESE INSTRUCTIONS

Note: Performance of this mobile waste oil drainer may vary depending on variations in air pressure and compressor capacity.



Product Specific Safety Precautions

1. Do not smoke near this equipment.
2. Keep the mobile waste oil drainer away from heat, high voltage, flammable and explosive environments
3. Use in a well ventilated area.
4. When leaks are found in the equipment or hoses, immediately turn the air compressor off and repair the leaks.
5. Do not exceed the recommended operating air pressure. This could damage equipment.
6. Keep a fire extinguisher nearby in case of fires.
7. Always protect your skin and eyes from contact with oil and solvents.
8. Do not start an engine during the time of oil extraction.
9. Beware of the oil extracted from the vehicle, as temperature of oil is high, always between 40~60°C.
10. Waste oil should be properly disposed or recycled. Please contact with your local waste liquid/solid authority for information on recycling.

Warning

1. Please read this Manual carefully and fully understand it before operating the mobile waste oil drainer.
2. In order to avoid the aging of the rubber parts, do not expose the machine in the sunshine; do not leave the machine in a moist place, it must be stored in a dry place with good ventilation. Because of the multi functions, the machine is equipped with many accessories, and must be cared for by a special technician.
3. This machine has been tested strictly before leaving the factory, but the operator must obey the operating instructions. Please do not try to take apart and repair it by yourself, if you meet with any faults, please contact Alemlube.
4. After using, always cut off connection to compressed air.
5. Do not lower than the minimum air inlet required pressure. Do not exceed the max. air inlet required pressure.
6. Do not dismantle this machine by unqualified or unauthorised personnel. Otherwise the warranty will be void.
7. If you have any inquiries, please contact Alemlube.

Transport and Unpacking

When unpacking, check to make sure that all the parts are included. Refer to the Assembly section, and the Assembly Drawing and Parts List at the end of this manual.

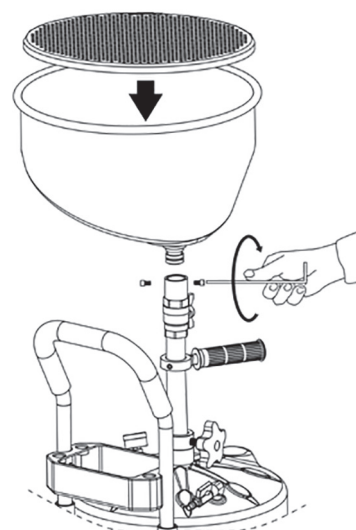
Once the product has been unpacked, check that the instructions manual is there, that the material is complete and there are no parts which have been visibly damaged. **If any parts are missing or broken, please contact Alemlube as soon as possible.**

In the package, you will find:

- a) One Complete Oil Tank
- b) One Oil Collecting tray
- c) One User's Manual

Assembly Instructions

1. Open the packaging and take out the machine main body.
2. Open the carton to take out the oil tray, checking for any damage or not.
If so, please immediately contact Alemlube.
3. Screw the oil tray on the top of lifting pole via clock-wise direction. (FIG. 1)
4. Check that all pipes are well connected.
5. Make sure all ball valves and switches are closed.



(FIG. 1)

NSW
TEL: (02) 9677 1555
FAX: (02) 9675 1155

QLD/PNG
TEL: (07) 3204 9166
FAX: (07) 3204 1224

VIC/TAS
TEL: (03) 8787 8288
FAX: (03) 8787 8266

WA
TEL: (08) 9302 4199
FAX: (08) 9303 2095

SA/NT
TEL: (08) 8241 7111
FAX: (08) 8241 7011

NZ
TEL: (64) 9 447 1007
FAX: (64) 9 447 1008

Operation instructions

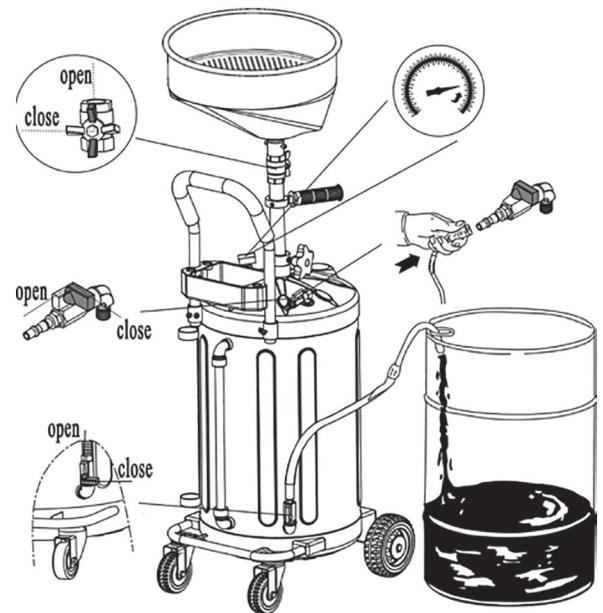
Oil Collections

1. Lift the vehicle up, then push the machine to right under the engine oil outlet.
2. Lift the pole by the easy handle to the appropriate height then lock by tightening the two locking nuts.
3. Open the wing valve under the oil tray and unscrew the oil drain plug of the vehicle engine.
5. When all waste oil has been drained, replace the drain plug.

Drainer Tank Emptying

When the oil retained in the tank is near full (see oil window), you need to eject oil into a disposal tank and dispose of according to local government regulations.

1. Make sure the ejection valve (FIG 2), the wing valve (FIG 2) and the air inlet valve are all closed.
2. Open the ejection valve (FIG 2) then hook the ejection hook on the external disposal tank.
3. Connect the compressed air with the air inlet fixed on the top of the tank then turn on the air inlet valve gradually and slowly, the oil will be transferred to the external disposal tank, turn off the air compressor when the pressure reaches the desired pressure (The safety valve will automatically release pressure when the tank pressure reaches 1.0 bar/14psi, turn off the air compressor immediately and quickly drop the tank pressure below 1.0bar/14psi, otherwise it could lead to serious incident).
4. After ejection turn off all valves and remove all pipes, return oil drum and machine to the original places.



(FIG. 2)

Inspection, Maintenance and Cleaning

1. Before each use, inspect the general condition of the machine. Check for loose screws, air and oil leakage, misalignment or binding of moving parts, cracked or broken parts, and any other condition that may affect its safe operation. If abnormal noise or vibration occurs, have the problem corrected before further use. Do not use damaged equipment.
2. Periodically recheck all hoses, valves, nuts, bolts, and screws for tightness.
3. For an extended period of use, please check the adapter/O seals of the adaptors for leakage.
4. It's necessary to drain the waste oil as soon as possible in case of the corroding of the tank.
5. Store in a clean and dry location.
6. All maintenance and repairs must be completed by a qualified technician.

NSW
TEL: (02) 9677 1555
FAX: (02) 9675 1155

QLD/PNG
TEL: (07) 3204 9166
FAX: (07) 3204 1224

VIC/TAS
TEL: (03) 8787 8288
FAX: (03) 8787 8266

WA
TEL: (08) 9302 4199
FAX: (08) 9303 2095

SA/NT
TEL: (08) 8241 7111
FAX: (08) 8241 7011

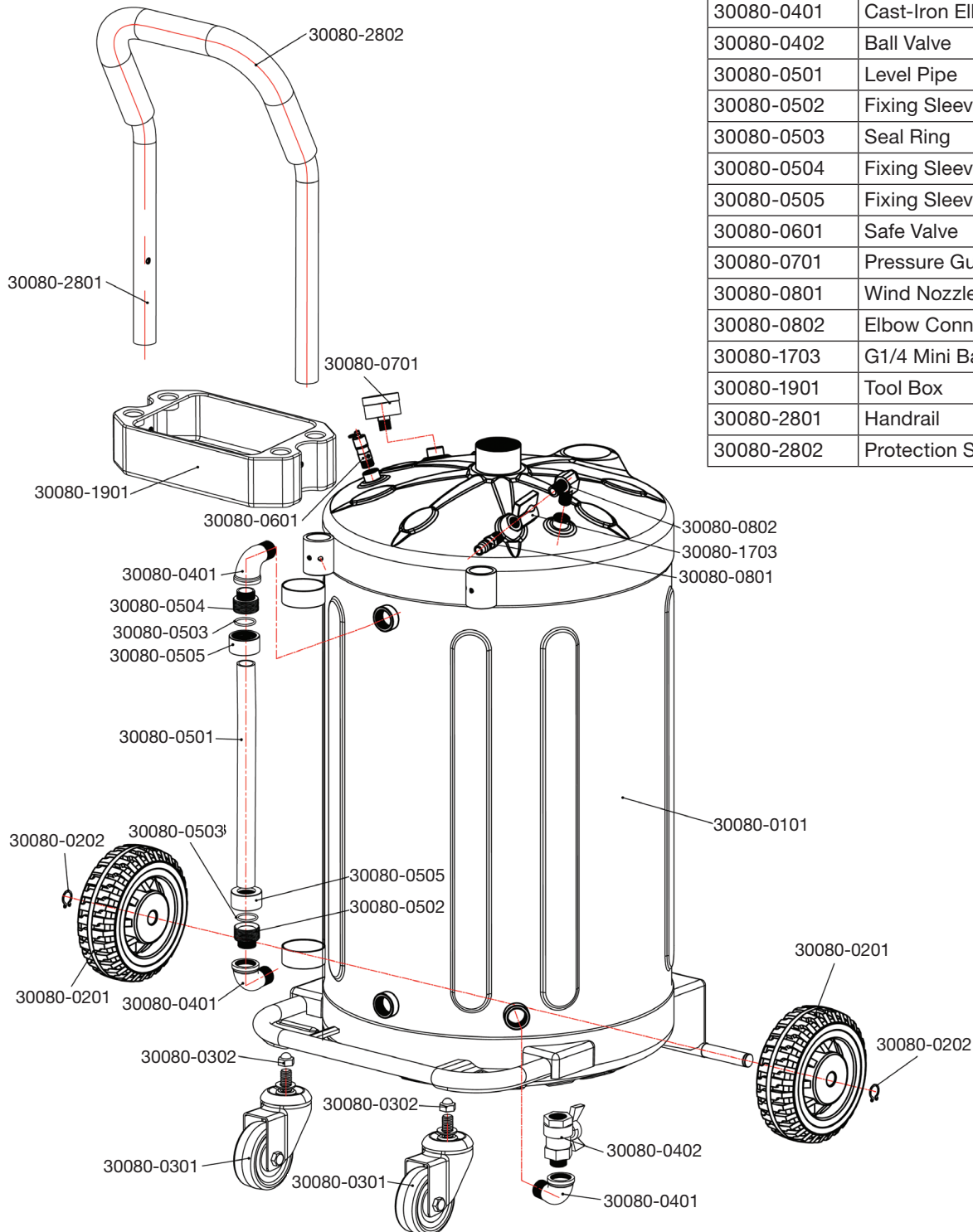
NZ
TEL: (64) 9 447 1007
FAX: (64) 9 447 1008

Parts and Drawing Breakdown for the 30080

Ordering Spare Parts

Parts List – Part No. 30080

Item	Description	Quantity
30080-0101	30080 Tank	1
30080-0201	6" Directional Wheel	2
30080-0202	Snap Spring	1
30080-0301	4" Universal Wheel	2
30080-0302	Nut	2
30080-0401	Cast-Iron Elbow	3
30080-0402	Ball Valve	1
30080-0501	Level Pipe	1
30080-0502	Fixing Sleeve (Screw)	1
30080-0503	Seal Ring	2
30080-0504	Fixing Sleeve (Screw)	1
30080-0505	Fixing Sleeve (Nut)	2
30080-0601	Safe Valve	1
30080-0701	Pressure Gauge	1
30080-0801	Wind Nozzle	1
30080-0802	Elbow Connector	1
30080-1703	G1/4 Mini Ball Valve	1
30080-1901	Tool Box	1
30080-2801	Handrail	1
30080-2802	Protection Sheath	1



NSW
TEL: (02) 9677 1555
FAX: (02) 9675 1155

QLD/PNG
TEL: (07) 3204 9166
FAX: (07) 3204 1224

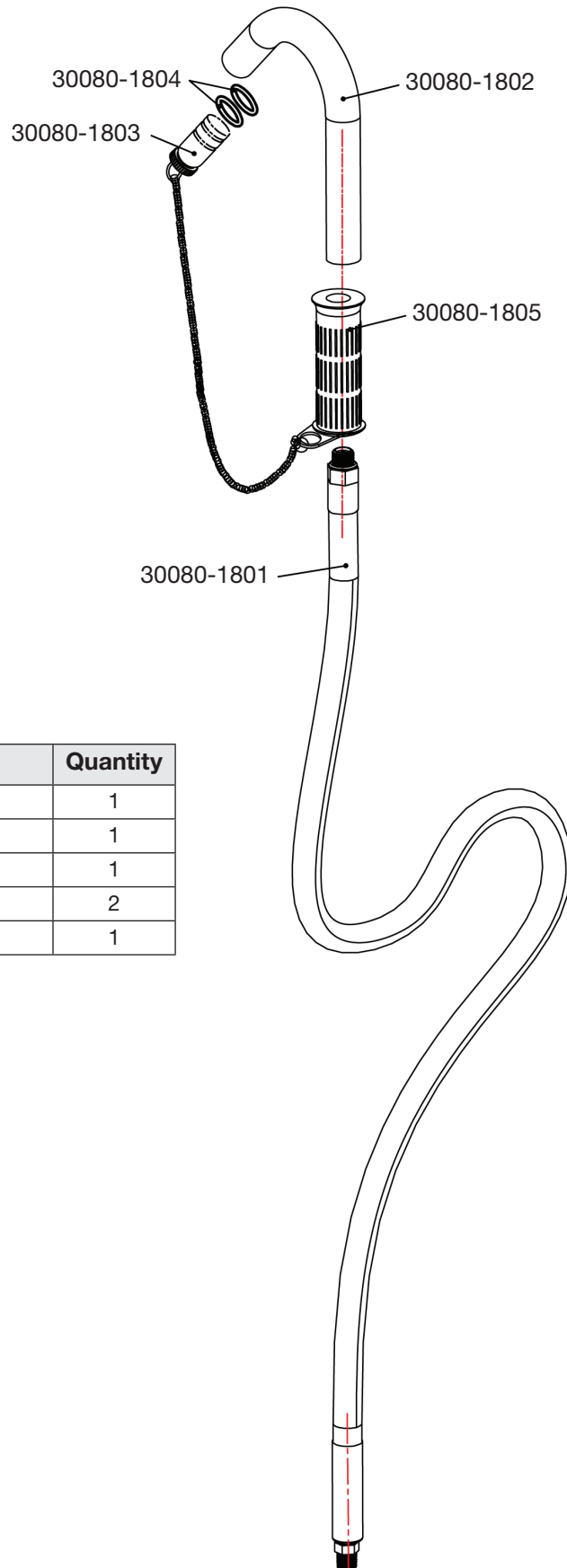
VIC/TAS
TEL: (03) 8787 8288
FAX: (03) 8787 8266

WA
TEL: (08) 9302 4199
FAX: (08) 9303 2095

SA/NT
TEL: (08) 8241 7111
FAX: (08) 8241 7011

NZ
TEL: (64) 9 447 1007
FAX: (64) 9 447 1008

Oil Drain Hose with Hook



Parts List – Part No.

Oil Drain Hose with Hook

Item	Description	Quantity
30080-1801	Oil Hose	1
30080-1802	Oil Drain Hook	1
30080-1803	Stopper	1
30080-1804	Seal Ring	2
30080-1805	Handle Sleeve	1

NSW
TEL: (02) 9677 1555
FAX: (02) 9675 1155

QLD/PNG
TEL: (07) 3204 9166
FAX: (07) 3204 1224

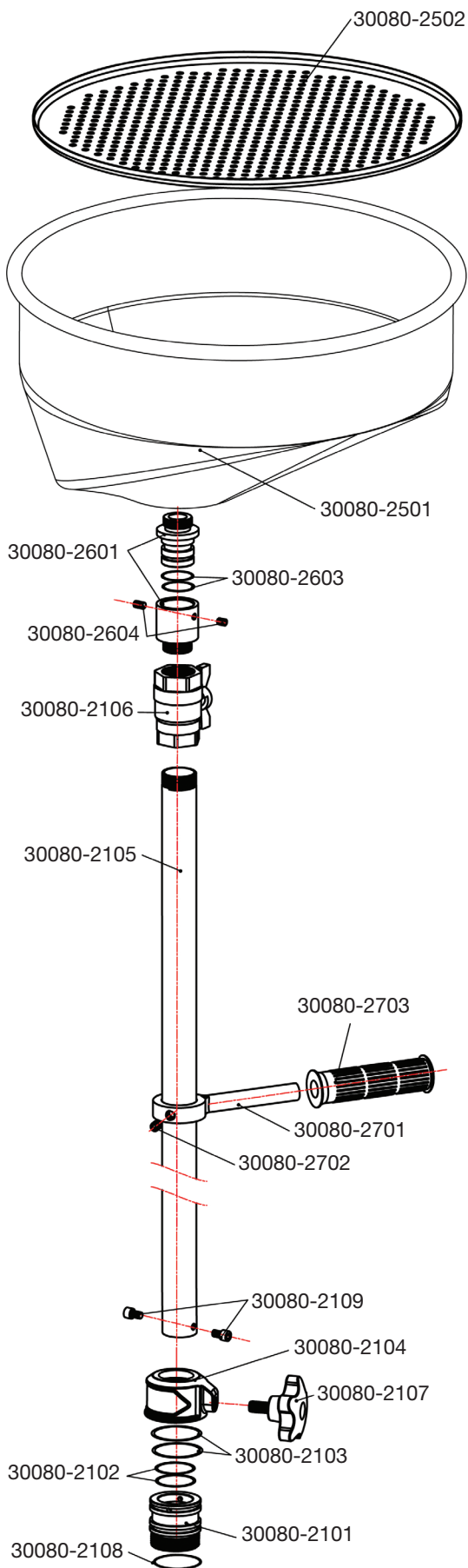
VIC/TAS
TEL: (03) 8787 8288
FAX: (03) 8787 8266

WA
TEL: (08) 9302 4199
FAX: (08) 9303 2095

SA/NT
TEL: (08) 8241 7111
FAX: (08) 8241 7011

NZ
TEL: (64) 9 447 1007
FAX: (64) 9 447 1008

Lift Pole Assembly



Parts List – Part No.

Lift Pole Assembly

Item	Description	Quantity
30080-2101	Seat	1
30080-2102	Seal Ring (38 x 3.5)	2
30080-2103	Seal Ring	2
30080-2104	Brake Sleeve	1
30080-2105	Lift Pole	1
30080-2106	Ball Valve	1
30080-2107	Knob	1
30080-2108	Seal Ring	1
30080-2109	Screw	2
30080-2501	Oil Tray	1
30080-2502	Strainer	1
30080-2601	Connector	2
30080-2603	Seal Ring	2
30080-2604	Loose-Proof Screw	2
30080-2701	Easy Handle	1
30080-2702	Screw	1
30080-2703	Handle Sleeve	1

NSW
TEL: (02) 9677 1555
FAX: (02) 9675 1155

QLD/PNG
TEL: (07) 3204 9166
FAX: (07) 3204 1224

VIC/TAS
TEL: (03) 8787 8288
FAX: (03) 8787 8266

WA
TEL: (08) 9302 4199
FAX: (08) 9303 2095

SA/NT
TEL: (08) 8241 7111
FAX: (08) 8241 7011

NZ
TEL: (64) 9 447 1007
FAX: (64) 9 447 1008