

#### Description

These model guns are designed to dispense petroleum-based greases (up to NLGI 2) for general lubrication applications. A 36-inch (0.91m) long high-pressure flexible hose extension, heavy-duty grease coupler, 1-hour fast charger and molded carrying case are included.

The guns are equipped with low battery and stall indicator lights and an LED flashlight. The guns use a 18V motor with three stages of gear reduction. A crank and yoke mechanism drives a reciprocating piston pump. The motor is powered by a rechargeable 18V / 3000 mAh Lithium-ion battery pack. Includes 2 18V batteries as standard.

Each model gun is designed for 3-way loading; cartridge, suction, and loader pump (requires optional loader fitting 322610). The guns are spring-primed and include an air bleed valve to aid priming.



Shoulder Strap	Tool Bag	Mobile Battery Charger (12 Vdc to 18 Vdc)	Loader Fitting
339812	340057	343154	322610

Maximum Pressure		Flow Rate		Delivery Capacity when Fully Charged	Grease Cylinder Capacity			Hose Length		Weight (Empty)	
					Bulk		Cartridge Size	Length			
psi	bar	Oz./Min.	Gms/Min.	Cartridges	Ounces	Gms	Ounces	Inches	Meters	Lbs	Kg
8,000	552	6	170	24	16	454	14	36	0.91	7.2	3.3

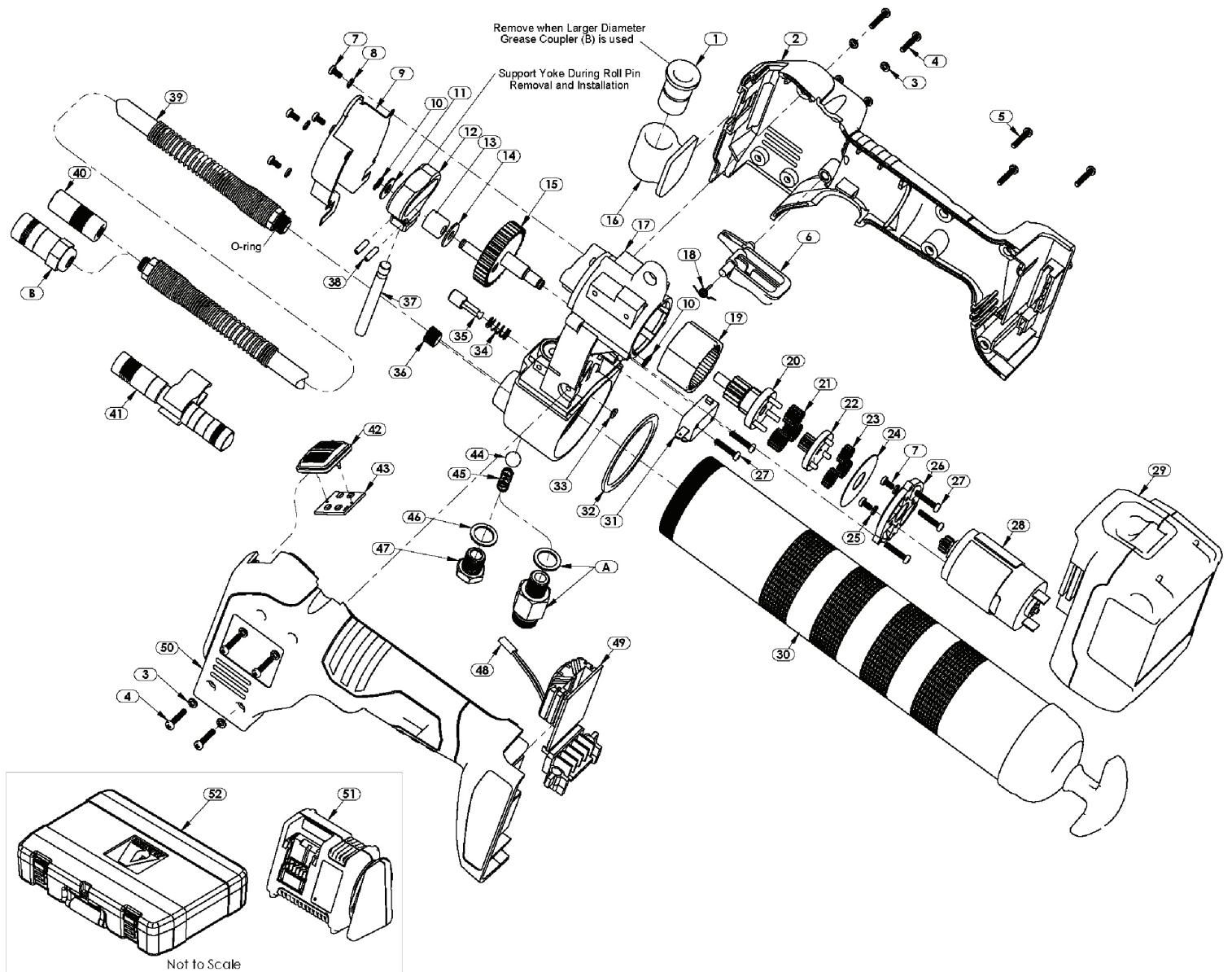
Sound pressure (LpA) 72.3 dB(A), uncertainty (K) 3 dB(A)

Acoustic power (LWA) 83.3 dB(A), uncertainty (K) 3 dB(A)

Vibration emission value (ah) 0.6 m/s<sup>2</sup>, uncertainty (K) 1.5 m/s<sup>2</sup>



# Parts And Drawing Breakdown For The 670AN3



NSW  
TEL: (02) 9677 1555  
FAX: (02) 9675 1155

QLD/PNG  
TEL: (07) 3204 9166  
FAX: (07) 3204 1224

VIC/TAS  
TEL: (03) 8787 8288  
FAX: (03) 8787 8266

WA  
TEL: (08) 9302 4199  
FAX: (08) 9303 2095

SA/NT  
TEL: (08) 8241 7111  
FAX: (08) 8241 7011

NZ  
TEL: (09) 447 1007  
FAX: (09) 447 1008

Item No.	Part No.	Description	Qty	Repair Kits				Notes
				393795-6 Ball Check	393757 Bleed Valve	393795-20 Electronic Circuitry*	393795-12 Head*	
1		Insert, Coupler (Rubber)	1					
2		Housing, Right	1					
3		Washer, Lock	10					
4		Screw, Machine	8					
5		Screw, Tapping	4					
6		Trigger	2					
7		Screw, M3 x 6	6					
8		Washer, M3, Lock	4					
9		Cover, Head	1					
10		Ring, Retaining	2				•	
11		Washer, 0.24" ID x 0.67" OD	1					
12		Yoke	1					
13		Bearing, Roller	1					
14		Washer, 0.24" ID x 0.59" OD	1					
15		Gear Assembly, Output	1					
16		Holster	1					
17		Head & Bearing Assembly	1				•	
18		Trigger Spring	1					
19		Gear, Internal	1					
20		Gear, Output Pinion	1					
21		Gear, Planet (Second Stage)	3					
22		Gear, Sun (Second Stage)	1					
23		Gear, Planet (First Stage)	3					
24		Washer	1					
25		Washer, kcoL	2					
26		Mount, Motor	1					
27		Screw, M3 x 16	5					
28	393795-19*	Motor Assembly (with Sun Gear)	1					
29	343151	Battery Pack, 18V	1					Models 595-A, -C
			2					Models 595-B, -D
30	339820	Cylinder Assembly, Grease	1					
31		Switch	1			•		
32	336523	Gasket	1					
33		O-Ring	1		•			
34		Spring, Bleed Valve	1		•			
35		Valve, Bleed	1		•			
36		Plug	1					
37		Piston	1				•	
38		Pin, Roll	2				•	
39	340067	Hose Assembly, Grease	1					Never Substitute
40	308730	Coupler, Grease	1					
41	343170	Flashlight with Clip	1					
42		Lens, LED	1					
43		Circuit Board, LED	1			•		
44		Ball, Check, 3/8" Diameter	1	•				
45		Spring, Check	1	•				
46		Gasket (Copper)	1	•			•	
47		Plug, Check	1	•				
48		Protector, Thermal	1			•		
49		Circuit Board and Battery Connector	1			•		
50		Housing, Left	1					
51	343152	Charger, Battery (120 Vac / 60 Hz)	1					Models 595-A, -B
	343153	Charger, Battery (230 Vac / 50 Hz)	1					Models 595-C, -D
52		Case, Carrying	1					
Optional								
A	340338	Relief Valve with Gasket						
B	6304-B	Coupler, Grease						
<b>Legend:</b> Part numbers left blank are not available separately. *Replacement of these items by other than an authorized Alemite Service Center voids the warranty.								

NSW  
TEL: (02) 9677 1555  
FAX: (02) 9675 1155

QLD/PNG  
TEL: (07) 3204 9166  
FAX: (07) 3204 1224

VIC/TAS  
TEL: (03) 8787 8288  
FAX: (03) 8787 8266

WA  
TEL: (08) 9302 4199  
FAX: (08) 9303 2095

SA/NT  
TEL: (08) 8241 7111  
FAX: (08) 8241 7011

NZ  
TEL: (09) 447 1007  
FAX: (09) 447 1008



## WARNING

Read all instructions: Failure to follow all instructions listed below may result in electric shock, fire and/or serious injury. Save these instructions.

### Work Area

- Keep work area clean and well lit. Cluttered and dark areas invite accidents.
- Do not operate power tools in explosive atmospheres, such as in the presence of flammable liquids, gases or dust. Power tools create sparks which may ignite the dust or fumes.
- Keep children and bystanders away while operating a power tool. Distractions can cause you to lose control.

### Electrical Safety

- Power tool plugs must match the outlet. Never modify the plug in any way. Do not use any adapter plugs with earthed (grounded) power tools. Unmodified plugs and matching outlets will reduce risk of electric shock.
- Avoid body contact with earthed or grounded surfaces such as pipes, radiators, ranges and refrigerators. There is an increased risk of electric shock if your body is earthed or grounded.
- Do not expose power tools to rain or wet conditions. Water entering a power tool will increase the risk of electric shock.
- Do not abuse the cord. Never use the cord for carrying, pulling or unplugging the power tool. Keep cord away from heat, oil, sharp edges or moving parts. Damaged or entangled cords increase the risk of electric shock.
- When operating a power tool outdoors, use an extension cord suitable for outdoor use. Use of a cord suitable for outdoor use reduces the risk of electric shock.
- If operating a power tool in a damp location is unavoidable, use a residual current device (RCD) protected supply. Use of an RCD reduces the risk of electric shock.

### Personal Safety

- Stay alert, watch what you are doing and use common sense when operating a power tool. Do not use a power tool while you are tired or under the influence of drugs, alcohol or medication. A moment of inattention while operating power tools may result in serious personal injury.
- Use personal protective equipment. Always wear eye protection. Safety equipment such as dust mask, non-skid safety shoes, hard hat, or hearing protection used for appropriate conditions will reduce personal injuries.
- Prevent unintentional starting. Ensure the switch is in the off-position before connecting to power source and/or battery pack, picking up or carrying the tool. Carrying power tools with your finger on the switch or energising power tools that have the switch on invites accidents.
- Remove any adjusting key or wrench before turning the power tool on. A wrench or a key left attached to a rotating part of the power tool may result in personal injury.
- Do not overreach. Keep proper footing and balance at all times. This enables better control of the power tool in unexpected situations.
- Dress properly. Do not wear loose clothing or jewelry. Keep your hair, clothing and gloves away from moving parts. Loose clothes, jewelry or long hair can be caught in moving parts.
- If devices are provided for the connection of dust extraction and collection facilities, ensure these are connected and properly used. Use of these devices can reduce dust related hazards.



NSW  
TEL: (02) 9677 1555  
FAX: (02) 9675 1155

QLD/PNG  
TEL: (07) 3204 9166  
FAX: (07) 3204 1224

VIC/TAS  
TEL: (03) 8787 8288  
FAX: (03) 8787 8266

WA  
TEL: (08) 9302 4199  
FAX: (08) 9303 2095

SA/NT  
TEL: (08) 8241 7111  
FAX: (08) 8241 7011

NZ  
TEL: (09) 447 1007  
FAX: (09) 447 1008



## WARNING

Read all instructions: Failure to follow all instructions listed below may result in electric shock, fire and/or serious injury. Save these instructions.

### Power Tool Use and Care

- Do not force the power tool. Use the correct power tool for your application. The correct power tool will do the job better and safer at the rate for which it was designed.
- Do not use the power tool if the switch does not turn it on and off. Any power tool that can not be controlled with the switch is dangerous and must be repaired.
- Disconnect the plug from the power source before making any adjustments, changing accessories, or storing power tools. Such preventive safety measures reduce the risk of starting the power tool accidentally.
- Store idle power tools out of the reach of children and do not allow persons unfamiliar with the power tool or these instructions to operate the power tool. Power tools are dangerous in the hands of untrained users.
- Maintain power tools. Check for misalignment or binding of moving parts, breakage of parts and any other condition that may affect the power tools operation. If damaged, have the power tool repaired before use. Many accidents are caused by poorly maintained power tools.
- Keep cutting tools sharp and clean. Properly maintained cutting tools with sharp cutting edges are less likely to bind and are easier to control.
- Use the power tool, accessories and tool bits etc., in accordance with these instructions and in the manner intended for the particular type of power tool, taking into account the working conditions and the work to be performed. Use of the power tool for operations different from intended could result in a hazardous situation.

### Battery Use and Care

- Recharge only with the charger specified by the manufacturer. A charger that is suitable for one type of battery pack may create a risk of fire when used with another battery pack.
- Use power tools only with specifically designated battery packs. Use of any other battery packs may create a risk of injury and fire.
- When battery pack is not in use, keep it away from other metal objects like paper clips, coins, keys, nails, screws, or other small metal objects that can make a connection from one terminal to another. Shorting the battery terminals together may cause burns or a fire.
- Under abusive conditions, liquid may be ejected from the battery; avoid contact. If contact accidentally occurs, flush with water. If liquid contacts eyes, additionally seek medical help. Liquid ejected from the battery may cause irritation or burns.
- Disconnect battery pack from gun before changing accessories, storing gun or unscrewing grease cylinder from the gun.
- Ensure the switch is in the off position before inserting battery pack. Inserting the battery pack into power tools that have the switch on invites accidents.
- Never attempt to open the battery pack for any reason.
- Do not expose the battery pack to water.
- Do not store the battery pack in locations where the temperature may exceed 104° F (40° C).
- Charge the battery pack only at ambient temperatures between 40° F (4° C) or above 104° F (40° C).



NSW  
TEL: (02) 9677 1555  
FAX: (02) 9675 1155

QLD/PNG  
TEL: (07) 3204 9166  
FAX: (07) 3204 1224

VIC/TAS  
TEL: (03) 8787 8288  
FAX: (03) 8787 8266

WA  
TEL: (08) 9302 4199  
FAX: (08) 9303 2095

SA/NT  
TEL: (08) 8241 7111  
FAX: (08) 8241 7011

NZ  
TEL: (09) 447 1007  
FAX: (09) 447 1008

## Specific Safety Rules



### WARNING

The gun can develop high pressure up to 8,000 psi (552 bar). Rupture of components can inject grease into skin and eyes, causing serious injury and possible amputation. If injured, seek immediate medical attention.

Do not operate without proper safety protection, gloves, and goggles. Hold hose at spring guard only. Do not use if hose is damaged or worn. Inspect hose before each use. Use only Alemite 340067 Grease Whip Hose.

This gun uses lubricants, that may be flammable and poisonous if ingested. Do not use gun near open flame or other fire hazards. Read all warnings on lubricants before using this gun.

Use ear protection to reduce the risk of induced hearing loss.

Disconnect battery pack from gun before changing accessories or storing the gun.



**Warning!** To reduce the risk of injury, the user must read the instruction manual.



Separate collection. This product must not be disposed of with normal household waste.

## Loading and Priming the Gun

**NOTE:** Refer to **Figure 2** for component identification on the following procedures.

### Cartridge Loading

1. Unscrew Grease Cylinder (30) from the gun.
2. Pull the follower rod and engage the groove in the follower rod with the slot in the Grease Cylinder cap.
3. Remove the plastic cap from the cartridge.
4. Apply a film of grease to the exposed inside surface of the cartridge.

**NOTE:** This is only necessary for a virgin gun.

5. Insert the cartridge into the Grease Cylinder.
  - Remove the tabbed seal from the cartridge.
6. Screw the Grease Cylinder onto the gun.
7. Disengage the follower rod from the slot in the Grease Cylinder cap.
  - Push the follower rod into the Grease Cylinder.

## Suction Loading

1. Unscrew Grease Cylinder (30) from gun.
2. Insert the head of the Grease Cylinder below the surface of the grease.
3. Slowly pull the follower rod outward from the Grease Cylinder cap until the groove is visible.
4. Engage the groove in the follower rod with the slot in the Grease Cylinder's cap.
5. Screw the Grease Cylinder onto the gun.
6. Disengage the follower rod from the slot in the Grease Cylinder cap.
  - Push the follower rod into the Grease Cylinder.

## Loader Pump



### WARNING

The gun can be equipped with an optional low-pressure Loader Fitting. Do not substitute with a high-pressure grease fitting. Personal injury can occur due to excessive pressure.

The use of a grease fitting will void the warranty.

### CAUTION

The Loader Fitting on the gun must mate with the loader coupler. The pump may not operate if the components are not compatible.

1. Pull the follower rod and engage the follower by rotating the rod.
2. Seat the Loader Fitting into the loader coupler.
  - Push down to hold the coupler valve open.
3. Operate the pump and view the movement of the follower rod.
4. Discontinue pump operation once the groove on the follower rod is visible.
5. Disengage follower rod from follower and push into the Grease Cylinder.



NW  
TEL: (02) 9677 1555  
FAX: (02) 9675 1155

QLD/PNG  
TEL: (07) 3204 9166  
FAX: (07) 3204 1224

VIC/TAS  
TEL: (03) 8787 8288  
FAX: (03) 8787 8266

WA  
TEL: (08) 9302 4199  
FAX: (08) 9303 2095

SA/NT  
TEL: (08) 8241 7111  
FAX: (08) 8241 7011

NZ  
TEL: (09) 447 1007  
FAX: (09) 447 1008



## Priming the Gun

In most cases the gun will prime simply by operating the Trigger several times.

Should grease fail to appear, air must be bled.

### Force Prime

This process manually assists air within the gun to be bled at the Bleed Valve.

1. Pull the follower rod and engage the follower by rotating the rod.
2. Depress Bleed Valve (35) and at the same time push on the follower rod.

Once the air is eliminated, operate the gun several times.

Once grease appears, disengage the follower rod from the follower and push into the Grease Cylinder.

## Gun Operation

Battery Pack (29) is intentionally shipped with a low charge.

Charge Battery Pack prior to use.

- Refer to the following section for details.

The battery needs to be charged before first use and whenever it fails to produce sufficient power on jobs that were easily done before. The battery may become warm while charging; this is normal and does not indicate a problem.

### Low Battery Indicator



The low battery indicator illuminates when there is sufficient battery charge to dispense approximately three cartridges of grease.

### Stall Indicator



The stall indicator illuminates when a stall condition causes the thermal protector to open. Release the trigger to turn off the stall indicator. The thermal protector resets automatically.

## CAUTION

**Air pockets in the grease can cause the gun to lose prime. Check for prime after each refill and before lubrication.**

**The gun is equipped with a thermal protector to prevent the motor from overheating. When a blocked bearing, line, or grease fitting causes the gun to stall, the thermal protector will open.**

**For maximum motor life, avoid operating at stall**

### Check Valve Contamination

Should the gun fail, the outlet check may be held open. Remove Plug (47), clean Ball (44), and the Ball seat of Head (17).

## Battery Pack and Charger Safety Rules

This manual contains important safety and operating instructions for Battery Pack part number 343151 and Battery Chargers 343152 and 343153.

## WARNING



**Before using the Battery Charger read all instructions and cautionary markings on Battery Charger (51), Battery Pack (29), and products using the Battery Pack.**

**To reduce the risk of injury, charge only Lithium-ion type rechargeable batteries. Other types of batteries may burst causing injury.**

**An extension cord should not be used unless absolutely necessary. Use of an improper extension cord could result in a risk of fire and electric shock. If an extension cord must be used, make sure it is 18-gauge. Check to ensure that the pins on the plug of the extension cord are the same number, size, and shape as those of the plug on the Charger. Make sure that the extension cord is properly wired and in good electrical condition.**

**Do not incinerate the Battery Pack, even if it is severely damaged or completely worn out. The Battery Pack may explode in fire.**



NSW  
TEL: (02) 9677 1555  
FAX: (02) 9675 1155

QLD/PNG  
TEL: (07) 3204 9166  
FAX: (07) 3204 1224

VIC/TAS  
TEL: (03) 8787 8288  
FAX: (03) 8787 8266

WA  
TEL: (08) 9302 4199  
FAX: (08) 9303 2095

SA/NT  
TEL: (08) 8241 7111  
FAX: (08) 8241 7011

NZ  
TEL: (09) 447 1007  
FAX: (09) 447 1008

---

## CAUTION

**Do not expose the Charger to rain, snow, or frost.**

**To reduce the risk of damage to electric plug and cord, pull by the plug rather than the cord when disconnecting the Charger.**

**Make sure the cord is located so that it will not be stepped on, tripped over, or otherwise subjected to damage or stress.**

**Do not operate the Charger with damaged cord or plug. Replace immediately.**

**Do not operate the Charger if it has received a sharp blow, been dropped, or otherwise damaged in any way.**

**Do not disassemble the Charger.**

**Do not charge the Battery when the temperature is below 40° F (4° C) or above 104° F (40° C).**

**The Charger is designed to operate on standard household electrical power. Do not attempt to use it on any other voltage.**

**Consecutive charging may cause overheating. If you need to recharge the Battery consecutively, wait for about 15 minutes to allow the Charger to cool.**

**Do not insert foreign material into the hole for the Battery in the Charger stand.**

**Do not disassemble the Battery.**

**Do not Store the gun and Battery assembly in locations where the temperature may reach or exceed 104° F (40° C).**

**Do not short-circuit the Battery.**

**Do not place the Charger in an area of extreme heat or cold. It works best at normal room temperature.**

---

## Battery Charger Operation

Charge the Battery only with the Charger provided.

Make sure power circuit voltage is same as that shown on the charger specifications plate. Press down to ensure the battery properly engages with the charger's contacts.

### Function of Red and Green Lights

- Red Light Flash  
When the charger is powered on, the Red light will flash once.
- Green Light Flashing  
Charging
- Green Light On  
Battery fully charged
- Red Light Rapid Flashing at 4HZ  
Battery will not charge
- Red Light Slow Flashing at 1HZ  
Battery too hot. Charging will restore when the battery pack cools down to 104° F (40° C).  
Battery overheating could be attributed to:  
A. Long continuous running  
B. Hot ambient temperature  
C. One or more cells are damaged

1 hour of charge time is required to fully charge the battery.

The Battery will become slightly warm to the touch while charging. This is normal and does not indicate a problem.



NSW  
TEL: (02) 9677 1555  
FAX: (02) 9675 1155

QLD/PNG  
TEL: (07) 3204 9166  
FAX: (07) 3204 1224

VIC/TAS  
TEL: (03) 8787 8288  
FAX: (03) 8787 8266

WA  
TEL: (08) 9302 4199  
FAX: (08) 9303 2095

SA/NT  
TEL: (08) 8241 7111  
FAX: (08) 8241 7011

NZ  
TEL: (09) 447 1007  
FAX: (09) 447 1008