

Description

20044N LED Work Light is the ideal portable workshop light source due to its low heat output, constant brightness, high shock resistant TPE and PC housing. The 20044N LED workshop light features a 3W COB high power super bright LED for large area light emission. Two LED battery lights indicate the state of battery life. For convenient hands free use the additional benefits of a magnetic base and a 360° fold away hanging hook.

Specifications

Charger	AC 100~240V 50/60Hz
Voltage / Current	DC 5V/1A
Battery	3600mAh Lithium-ion
Charging time	≤4 hours
Discharging time	≥4.5 hours
Luminous flux	230-250lm

Features

- Completely portable, rechargeable work light
- 3W COB high power super bright light emission
- Strong magnet in the bottom for parallel or multi-angle use
- 1 rear hook enables mounting for under hood & under car applications
- Includes both wall charger and in-car chargers

Battery treatment/charging:

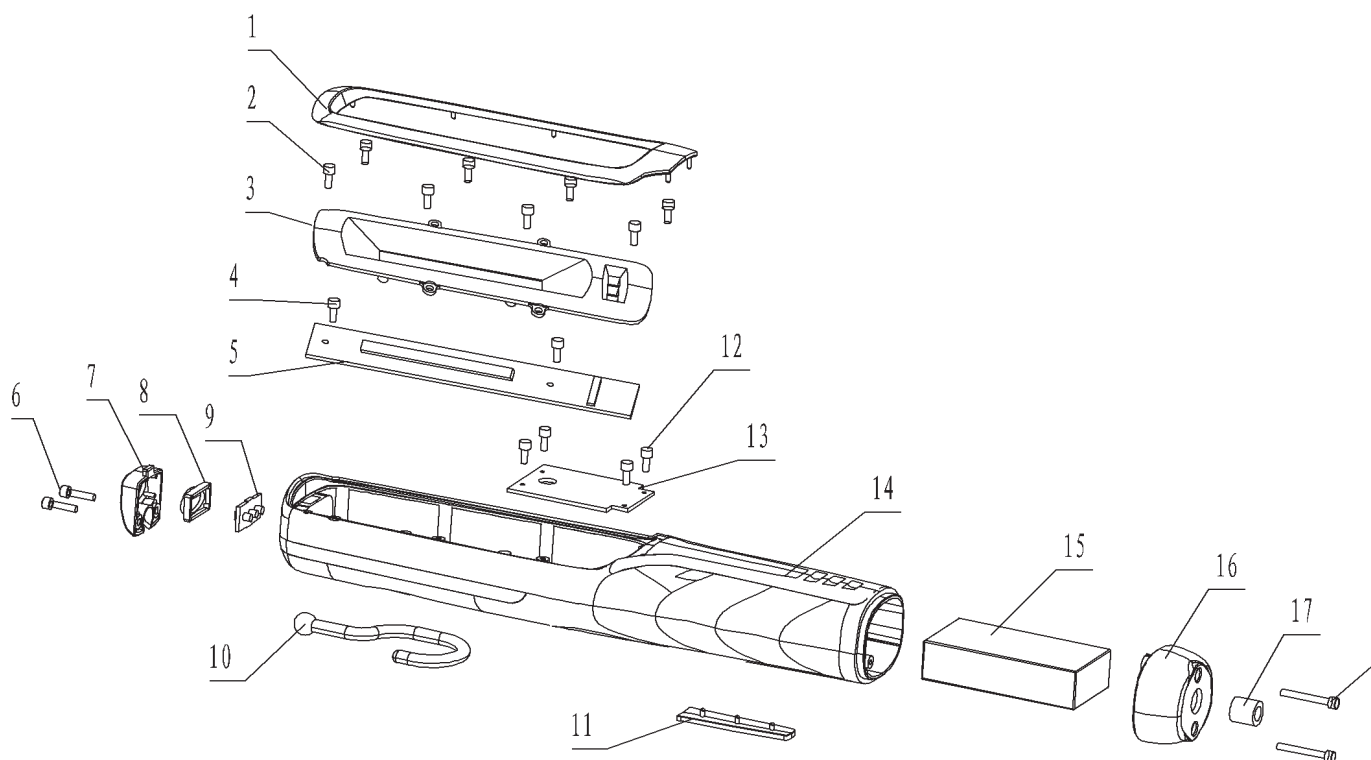
- 2 green indicator lights alternatively flash: charging, electricity is lower than 50%
- 1 green indicator light constantly on, the other is flashing: charging, electricity is more than 50%
- 2 green indicator lights constantly on: charging completed
- Do not leave battery in full discharged condition
- Recharge the work light at least once in every 30 days

Warning & Safety Issues:

- Red indicator light constantly on (when the light is switched) on: Time to recharge.
- Avoid looking directly into the beam
- Do not use the lamp near open flames



Parts And Drawing Breakdown For The 20044N



Ordering Spare Parts. Parts List – Part No. 20044N

NUMBER	PART NAME	MATERIAL	NUMBER	PART NAME	MATERIAL
20044N-1	Ornament	ABS	20044N-11	Logo Plate	PP
20044N-2	Reflector Screw	M2.5*6	20044N-12	Control Panel Screw	M2.5*6
20044N-3	Baby Reflector	ABS	20044N-13	Control Panel	FR4
20044N-4	PCB Screw	M2.5*6	20044N-14	Light Body	TPR+PP
20044N-5	LED Light Plate	Ai Plate	20044N-15	Battery	Lithium-ion
20044N-6	Platen Screw	M3*6	20044N-16	Bottom Cover	TPR+PP
20044N-7	Hook Platen	PP	20044N-17	DC Socket	
20044N-8	Spot Light Transparent Cover	PC	20044N-18	Bottom Cover Screw	M2.5*6
20044N-9	Spot Light PCB	Ai Plate			
20044N-10	Hook	PC			



NSW
TEL: (02) 9939 0711
FAX: (02) 9939 0411

QLD/PNG
TEL: (07) 3204 9166
FAX: (07) 3204 1224

VIC/TAS
TEL: (03) 8787 8288
FAX: (03) 8787 8266

WA
TEL: (08) 9302 4199
FAX: (08) 9303 2095

SA/NT
TEL: (08) 8241 7111
FAX: (08) 8241 7011

NZ
TEL: (09) 447 1007
FAX: (09) 447 1008