



EL SERIES

SERVICE INSTRUCTIONS

G10020 Lever Action Grease Gun

Description

The G10020 standard duty grease gun is capable of generating a maximum working pressure of up to 10,000psi. Its precision-machined head with air release valve/filler point offers superior quality. Every component including the barrel is tested to meet our quality control standards. The G10020 comes complete with a 150mm rigid tube and 4 jaw coupler and has a 600gram capacity when using bulk fill. The G10020 can deliver up to 0.90 grams of grease per stroke & is suitable for most greases up to NLGI2.

Specifications

Uses:	450gm cartridge, suction bulk fill or loader pump
Capacity:	450gm cartridge or 600gm bulk grease capacity
Pressure Capabilities:	Nominal: 8,000psi Maximum: Up to 10,000psi
Delivery:	0.90 grams per stroke
Weight:	1.5kg

Operating Instructions

There are two ways to fill the gun with grease:

A) 450gm Grease Cartridge:

Unscrew the grease barrel from the gun and insert the 450gm grease cartridge by holding the barrel assembly & pulling the rod back. Remove cap from the grease cartridge, insert the cartridge into the barrel & then rescrew the barrel assembly back onto the gun so that the cartridge sits well against the follower cup. Once in position, press the clamp down & push the rod firmly back into the barrel.

When using the gun with a cartridge, the follower cup must be folded back. The gun is supplied standard with the follower cup in this position.

B) Bulk Grease Loading:

When using the gun with bulk grease, the follower cup does not need to be changed to the forward position like other grease guns. Please leave the follower plate as it is, folded back.

Maintenance

Cleaning: always keep the follower cup free of impurities. Your grease should be clear of any foreign particles, dirt etc and the gun should be checked and cleaned regularly.



Head Office NSW
TEL: (02) 9939 0711
FAX: (02) 9939 0411

VIC
TEL: (03) 8787 8288
FAX: (03) 8787 8266

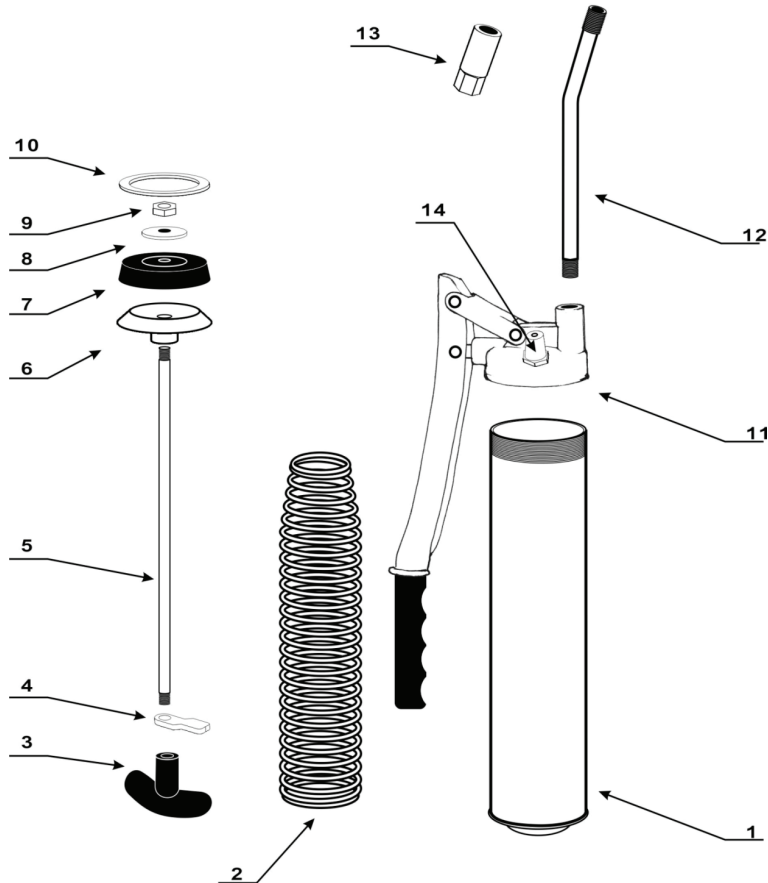
QLD
TEL: (07) 3889 8480
FAX: (07) 3889 8490

SA/NT
TEL: (08) 8241 7111
FAX: (08) 8241 7011

WA
TEL: (08) 9209 3066
FAX: (08) 9209 3933

TAS
TEL: (03) 6343 0477
FAX: (03) 6343 0911

Parts And Drawing Breakdown G10020



Ordering Spare Parts

Parts List – Part No. G10020

Item	Part N.O.	Description	Qty	Item	Part N.O.	Description	Qty
1	G10020-1	Barrel	1	8	G10020-8	Metal Washer	1
2	G10020-2	Spring Assembly	1	9	G10020-9	Nut	1
3	G10020-3	T Handle	1	10	G10020-10	Head Seal	1
4	G10020-4	Piston Rod Plate	1	11	G10020-11	Head Assembly	1
5	G10020-5	Piston Rod	1	12	14515	Rigid Extension	1
6	G10020-6	Disc Holder	1	13	14513	Coupler	1
7	G10020-7	Follower Cup	1	14	G10020-14	Loader Fitting	1
1,2,3,4,5,6,7,8,9	G10020-BA	Barrel Assembly	1				
6,7,8,9	G10020-FC	Follower Cup Assembly	1				

Trouble Shooting

Problem	Remedy
Air Block	If grease is not coming out of the gun, there is possibly an air pocket in the grease or in the head of the gun. Do as below but take the extension off the head of the gun and pump a few times till air pushes out with grease.
To clear a grease flow stoppage	A: Partially unscrew the head assembly from the gun barrel. B: Pull out plunger the rod handle, apply 3/4 turn, to connect rod end to the plunger plate. C: Re tighten the head assembly on the gun barrel. D: Depress the plunger rod by holding the handle & pulling on the gun barrel. At same time, action the lever of the grease gun & press the bleeder valve button repeatedly until grease flows from the gun nozzle. E: Disconnect the plunger rod & plate by pushing the rod handle & applying 1/4 turn. Then push rod fully into the gun barrel.

Head Office NSW
TEL: (02) 9939 0711
FAX: (02) 9939 0411

VIC
TEL: (03) 8787 8288
FAX: (03) 8787 8266

QLD
TEL: (07) 3889 8480
FAX: (07) 3889 8490

SA/NT
TEL: (08) 8241 7111
FAX: (08) 8241 7011

WA
TEL: (08) 9209 3066
FAX: (08) 9209 3933

TAS
TEL: (03) 6343 0477
FAX: (03) 6343 0911