

Description

The 332080N2 is a manually operated rotary action drum pump designed specifically for the transfer of AdBlue® from 60 litre or 205 litre drums. The pump is made from polypropylene and is thus lightweight at only 2.3kg. The 332080N2 is supplied complete with 3m of delivery hose, stainless steel spout and a Trisure drum adaptor.

The 332080N2 rotary drum pump can transfer AdBlue® at a rate of 18 litres per minute.

Specifications

Uses	AdBlue® transfer for 60 or 205L drums.
Discharge Quality	0.3 litres per revolution / 18 litres per minute
Material / Weight	Ryton/Stainless Steel Weight: 2.3kgs

Assembly Instructions

1 Suction Tube and Strainer Assembly

Thread strainer (part No 19) to first piece of 3 part suction tube. Use teflon tape (provided) on joint threads. Thread a union (part No 18) to the opposite end of the suction tube, using teflon tape, & connect a second length of suction tube. Continue until all lengths are assembled. 2 unions & 3-15" suction tubes are provided. Slide bung adaptor (part No.17) over the top section of the suction tube. Screw the suction tube assembly into the bottom of the pump body (part No 8). Make sure to use teflon tape or other joint compound.

Note: All connections must be air-tight for the pump to create suction & operate correctly

2 Crank Arm & Handle Assembly

Remove 1 metal nut (A), from threaded shaft of handle. b. Finger-tighten remaining nut (B) against plastic handle. c. Insert nut removed in step 'a' into crank arm. d. Thread metal shaft of pump handle into crank arm until shaft is flush with nut A in crank arm. e. Loosen nut B from plastic handle, tighten against crank arm.

Note: Plastic handle should spin freely on threaded metal shaft.

3 Pump Handle Assembly

Attach the pump handle to rotor shaft. Align the set-screw with the indentation on rotor shaft and tighten. Make sure that the set screw seats properly in the indentation.

4 Spout Assembly

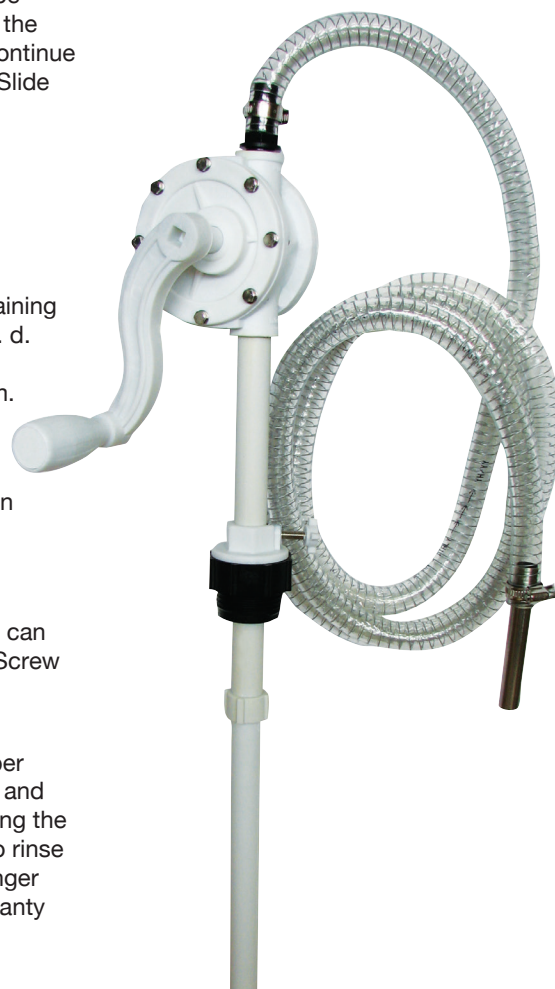
Insert male end of discharge spout into threaded female end & tighten. Spout can be rotated 360 degrees. Apply tape to 3/4" male thread on discharge spout. Screw into 3/4" fem opening on body. Hand tighten.

5 WARNING CRYSTALLISATION

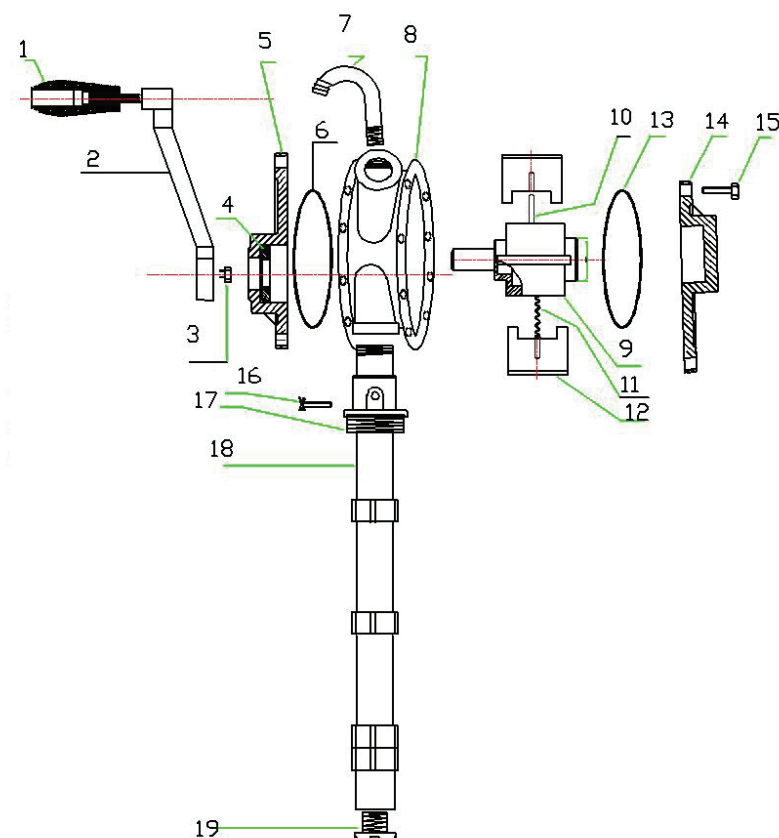
NOTE: Pumping AdBlue® and leaving the AdBlue solution in the pump chamber overnight and thus in contact with air will make the Adblue solution crystallise and become hard and viscous. The internal vanes & rotor will bind and seize making the pump impossible to turn thus breaking the handle, shaft and rotor. A failure to rinse the pump out thoroughly with water after each and every use will ensure a longer pump life and no breakdowns. Failure to follow this process will void the warranty and all repairs will be fully chargeable.

Operating Instructions

1. Turn the handle 5 or 6 times. When liquid begins to flow down, fix the indicated point to that of the handle.
2. When it stops flowing, move the handle slightly
3. After use, fix the handle to the indicated point.
Then the liquid inside the pump can flow back into the drum.



Parts And Drawing Breakdown For The 332080N2



Ordering Spare Parts. Parts List – Part No. 332080N

NUMBER	PART NAME	MATERIAL	NUMBER	PART NAME	MATERIAL
332080N2-1	Handle	PP	332080N-11	Spring	316 STS
332080N2-2	Hand Rod	PP	332080N-12	Vane	PP
332080N2-3	Screw	STEEL	332080N-13	O Ring	VITON
332080N2-4	Oil Seal	TEFLON	332080N-14	Back Casing	PP
332080N2-5	Front Casing	PP	332080N-15	Casing Screw	STS
332080N2-6	O Ring	VITON	332080N-16	Locking Nut	STS
332080N2-7	Out Let Spout	PP	332080N-17	Bung Adaptor	PP
332080N2-8	Pump Body	PP	332080N-18	Suction Tube	PP
332080N2-9	Rotor	PP	332080N-19	Strainer	PP
332080N2-10	Pin	316 STS			

STS= Stainless Steel

NSW
TEL: (02) 9677 1555
FAX: (02) 9675 1155

QLD/PNG
TEL: (07) 3204 9166
FAX: (07) 3204 1224

VIC/TAS
TEL: (03) 8787 8288
FAX: (03) 8787 8266

WA
TEL: (08) 9302 4199
FAX: (08) 9303 2095

SA/NT
TEL: (08) 8241 7111
FAX: (08) 8241 7011

NZ
TEL: (64) 9 447 1007
FAX: (64) 9 447 1008