

Description

Model 30090 is suitable for extracting the engine oil from any motor vehicle by suction hose with the probes.

Waste oil suction is carried out by an air operated vacuum pump with no moving and no worn parts, putting a probe or connector inserted into the motor oil level gauge. A suction hose, rubber handle and a set of connectors and probes are also included.

The unit comes complete with a 80L capacity reservoir and includes a tyre gauge and a safety valve to avoid over pressure.

Warnings

- Do not extract caustic or flammable products
- Do not expose the reservoir to any source of heat
- While extracting high temperature oils, keep hands and face protected
- Only use the device for the purpose for which it has been designed
- Do not modify any component of the equipment
- Only use original spare parts
- Our technical office is at you full disposal for any information you may need

Operating Instructions

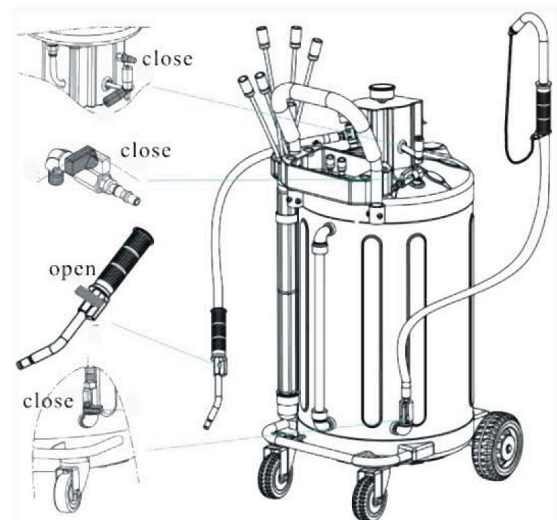
Setting up for the oil suction

- 1 Close the valve #0033
- 2 Close the valve #0035
- 3 Close the valve #0042
- 4 Open the valve #0051

Connect shop air (8 bar) to vacuum pump male adapter(#0006), air will flow through the muffler until the gauge approaches the red field (after 2.5-3min). Disconnect the shop air. The unit is now depressurised and ready for use. (Fig 1)

Operation

- 1 Oils should always be removed from their reservoirs when hot. The suction capacity of the unit is equal to 2/3 of its reservoir capacity.
- 2 With the engine still warm, remove the dipstick and insert the largest possible probe as far down as it will go.(Fig 2)
- 3 Connect the suction hose to the probe. (Fig 3)
- 4 Open the ball valve on the suction hose, the oil is sucked from the sump into the graduated transparent chamber where it can be inspected for quantity and quality. As soon as the sump is emptied, close ball valve. (Fig 4)



(Fig 1)



NSW
TEL: (02) 9939 0711
FAX: (02) 9939 0411

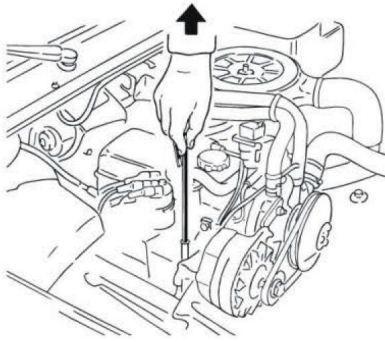
QLD/PNG
TEL: (07) 3204 9166
FAX: (07) 3204 1224

VIC/TAS
TEL: (03) 8787 8288
FAX: (03) 8787 8266

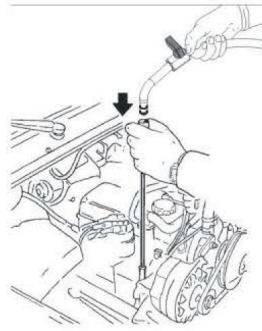
WA
TEL: (08) 9209 3066
FAX: (08) 9209 3933

SA/NT
TEL: (08) 8241 7111
FAX: (08) 8241 7011

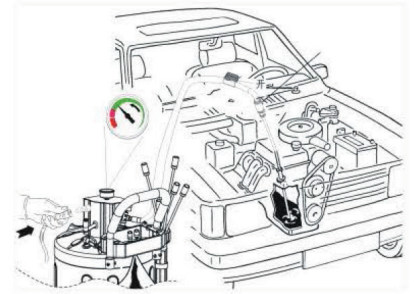
NZ
TEL: (09) 447 1007
FAX: (09) 447 1008



(Fig 2)



(Fig 3)



(Fig 4)

Emptying the Reservoir

- 1 Close the valve #0033
- 2 Close the valve #0051
- 3 Open the valve #0042
- 4 Open the valve #0035

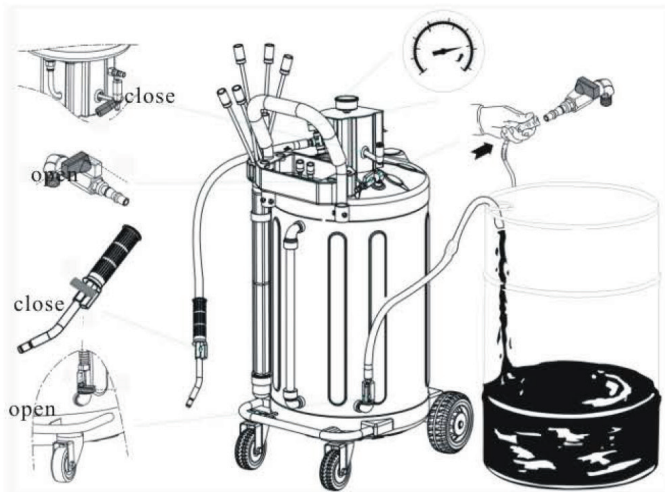
Before draining the oil, close the ball valve (#0033, #0051). Attach the end of the drain hose to a suitable waste oil container. Connect (0,5 Bar) shop air to quick plug (#0043) and open the ball valve (#0035), (#0042) (Fig 5).

After the fluids have been transferred from the unit's reservoir tank, close ball valve (#0035).

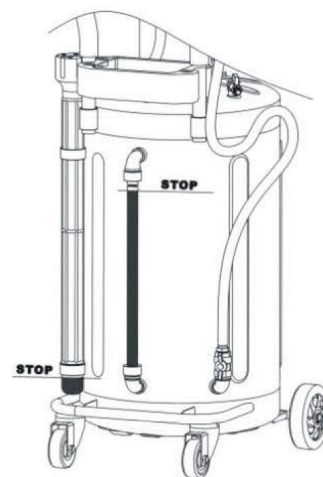
The unit is equipped with a pneumatic safety relief valve that has been factory calibrated at 1 bar (14 PSI).

CAUTION

- 1 Never fill the reservoir over the maximum level indicated by the level gauge (#0016) that is located on the side of the reservoir. (Fig6)
- 2 Do not fill the waste oil cup full.(#0038).to avoid static electricity. Pump should be washed out before usage since processing lubricants could contaminate the fluid.



(Fig 5)



(Fig 6)

NSW
TEL: (02) 9939 0711
FAX: (02) 9939 0411

QLD/PNG
TEL: (07) 3204 9166
FAX: (07) 3204 1224

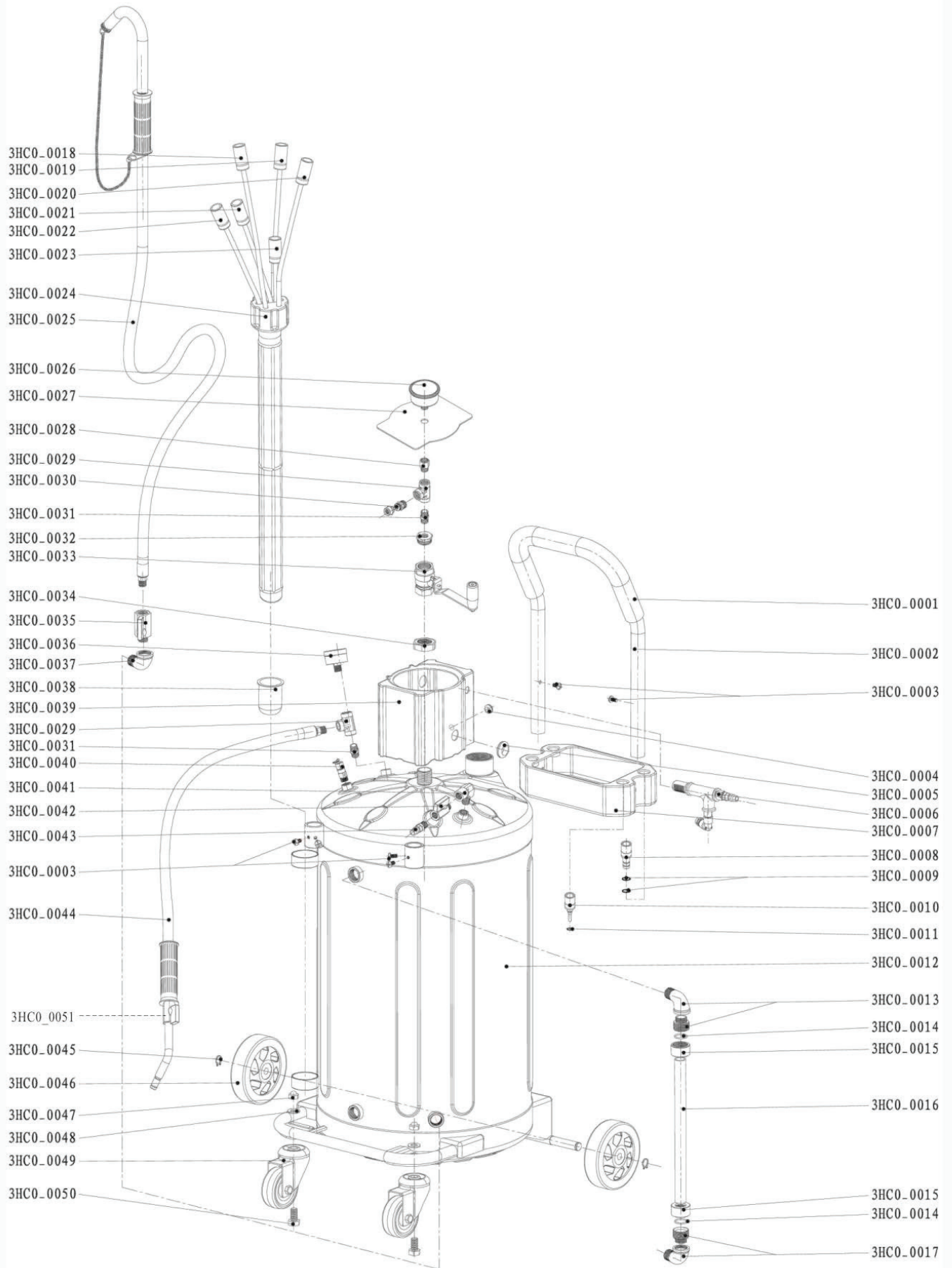
VIC/TAS
TEL: (03) 8787 8288
FAX: (03) 8787 8266

WA
TEL: (08) 9209 3066
FAX: (08) 9209 3933

SA/NT
TEL: (08) 8241 7111
FAX: (08) 8241 7011

NZ
TEL: (09) 447 1007
FAX: (09) 447 1008

Exploded View Breakdown 30090



NSW

TEL: (02) 9939 0711
FAX: (02) 9939 0411

QLD/PNG

TEL: (07) 3204 9166
FAX: (07) 3204 1224

VIC/TAS

TEL: (03) 8787 8288
FAX: (03) 8787 8266

WA

TEL: (08) 9209 3066
FAX: (08) 9209 3933

SA/NT

TEL: (08) 8241 7111
FAX: (08) 8241 7011

NZ

TEL: (09) 447 1007
FAX: (09) 447 1008

Parts List

Item No.	Description	Quantity
3HCO_0001	handle sleeve	1
3HCO_0002	handle	1
3HCO_0003	screw	8
3HCO_0004	protection cup	1
3HCO_0005	protection cup	1
3HCO_0006	vacuum pump	1
3HCO_0007	tool tray	1
3HCO_0008	connector for probes (Volkswagen)	1
3HCO_0009	o-ring	2
3HCO_0010	connector for probes (BMW)	1
3HCO_0011	o-ring	1
3HCO_0012	reservoir	1
3HCO_0013	level gauge adapter 1	1
3HCO_0014	o-ring	2
3HCO_0015	screw	1
3HCO_0016	o-ring	1
3HCO_0017	level gauge adapter 3	1
3HCO_0018	probe 5 x 700 flexible	1
3HCO_0019	probe 5 x 700 metal	1
3HCO_0020	probe 6 x 700 flexible	1
3HCO_0021	probe 6 x 700 metal	1
3HCO_0022	probe 7 x 1000 flexible	1
3HCO_0023	probe 8 x 700 flexible	1
3HCO_0024	suction oil tube	1
3HCO_0025	drainer hose	1
3HCO_0026	vacuum meter	1

Item	Description	Quantity
3HCO_0027	cover	1
3HCO_0028	adapter	1
3HCO_0029	T-adapter	1
3HCO_0030	adapter	1
3HCO_0031	adapter	1
3HCO_0032	adapter	1
3HCO_0033	ball valve	1
3HCO_0034	nut	1
3HCO_0035	ball valve	1
3HCO_0036	gauge	1
3HCO_0037	adapter	1
3HCO_0038	waste oil cap	1
3HCO_0039	plastic cover	1
3HCO_0040	safety valve	1
3HCO_0041	adapter	1
3HCO_0042	ball valve	1
3HCO_0043	plug	1
3HCO_0044	suction hose	1
3HCO_0045	clamp	2
3HCO_0046	wheel	2
3HCO_0047	nut	2
3HCO_0048	washer	2
3HCO_0049	castor	2
3HCO_0050	threaded rod	2
3HCO_0051	ball valve	1

NSW
TEL: (02) 9939 0711
FAX: (02) 9939 0411

QLD/PNG
TEL: (07) 3204 9166
FAX: (07) 3204 1224

VIC/TAS
TEL: (03) 8787 8288
FAX: (03) 8787 8266

WA
TEL: (08) 9209 3066
FAX: (08) 9209 3933

SA/NT
TEL: (08) 8241 7111
FAX: (08) 8241 7011

NZ
TEL: (09) 447 1007
FAX: (09) 447 1008