

Description

The H19030/H19030C diesel fuel hose reel dispensing kit is designed for industrial and general applications requiring the convenience of a 10 metre long hose. Constructed with heavy duty powder coated steel, the H19030/H19030C features a spring loaded lock pin to prevent the hose from unreeling, compact handle, long service swivel and is easy to install and maintain. Mounting options include positioning on the wall, ceiling or floor. Weighing in at 16.5kg and supplied with an automatic shut off nozzle, the H19030/H19030C diesel fuel hose reel dispensing kit is economical, packed with features and has a maximum working pressure of 300psi/20 bar. **H19030C** model comes with a 3/4" BSP (f) nozzle swivel with automatic shut off when fuel tank is full.

Specifications

Suitable for	Measuring the transfer of diesel
Hose length	10m x 19mm ID hose
Material	Heavy duty powder coated steel construction & NBR rubber
Pressure	20bar (300psi)
Flow rate	60 L/min
Weight	16.5kg (gross weight including packaging: 18.5kg)
Inlet/Outlet	3/4" BSP (F)
Working Temp	-20-60°C

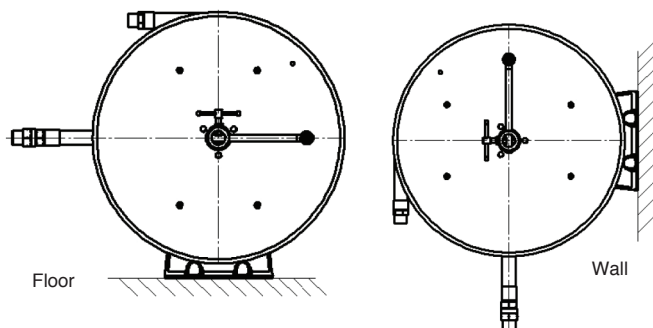
⚠ WARNING

Read carefully and understand all INSTRUCTIONS before operating. Failure to follow the safety rules and other basic safety precautions may result in serious personal injury.

Save these instructions in a safe place and on hand so that they can be read when required. Keep these instructions to assist in future servicing.

Installation

- 1 Prior to mounting the hose reel, ensure that the supply line pressure does not exceed the maximum working pressure of the hose reel.
- 2 Unpack and inspect reel for damage. Turn by hand to check for smooth operation. Check for completeness.
- 3 For wall mounting: Install reel at most 5ft/1.5m above the floor
- 4 You will need to purchase appropriate hardware for mounting your new reel.
 - 1) The reel base has four 10.5mm drilled holes for mounting on a suitable flat surface.
 - 2) Using the four holes in the base, mount the reel in the desired location. Be sure to use appropriate hardware and tighten securely.



- 5 Apply teflon tape or pipe sealant to supply line threads, attach to reel inlet and tighten. The other end of incoming line can now be connected to desired supply source.
- 6 Apply Teflon tape or pipe sealant to outlet fitting on reel hose, then attach to desired tool, or nozzle. Check connection for leakage, also check hose reel for correct operation. See: Operation section.
- 7 If you want to prevent hose from unreeling when using the product, you should tighten the lock pin #13.



NSW
TEL: (02) 9939 0711
FAX: (02) 9939 0411

QLD/PNG
TEL: (07) 3204 9166
FAX: (07) 3204 1224

VIC/TAS
TEL: (03) 8787 8288
FAX: (03) 8787 8266

WA
TEL: (08) 9209 3066
FAX: (08) 9209 3933

SA/NT
TEL: (08) 8241 7111
FAX: (08) 8241 7011

NZ
TEL: (09) 447 1007
FAX: (09) 447 1008


Maintenance

- 1 Make sure the hose is in proper working order.
- 2 Clean the hose with a cloth dipped in warm water to remove dirt or deposits and ensure correct rewinding.
- 3 Do not use detergents or solvents which could prove incompatible with cable-winder materials.
- 4 Dismantling of the unit by unskilled personal could prove hazardous; the risk involved mainly concern the preloaded springs.

Limited Manufacturer Warranty

- 1 The manufacturer warrants this hose reel against defects in material and craftsmanship, for a period of 24 months from date of purchase, but not including hose and O-ring parts.
- 2 Manufacturer's liability is limited to replacement or repair of defective material within the warranty period, when returned freight prepaid to the distributor or their designated service depot.
- 3 The warranty does not cover damage caused by accident, misuse or faulty installation.
- 4 The reel must be installed and maintained in compliance with the instructions.

Warnings & Safety Issues

 The warnings, cautions, and instructions discussed in this instruction manual cannot cover all possible conditions or situations that could occur.

It must be understood by the operator that common sense and caution are factors which cannot be built into this product, but must be supplied by the operator.

WARNING

Your risk from these exposures varies, depending on how often you do this type of work. To reduce your exposure to these chemicals: work in a well ventilated area, and work with approved safety equipment, such as those dust masks that are specially designed to filter out microscopic particles.

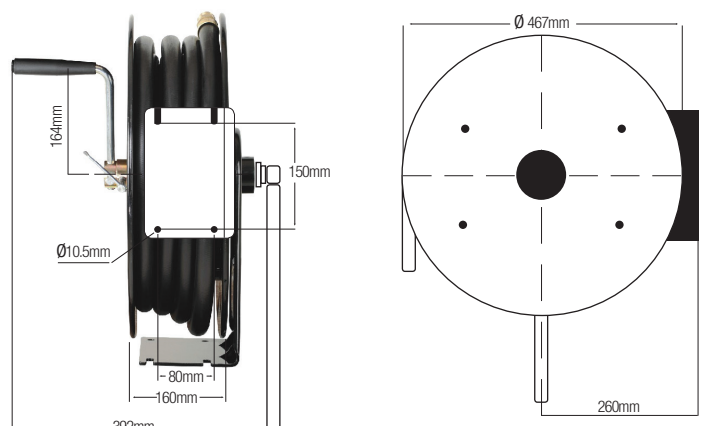
- 1 Use proper eye protection when assembling and using the hose reel.
- 2 Keep children away from the work area.
- 3 Personal injury and/or equipment damage may result if proper safety precautions are not observed.
- 4 Ensure that reel is properly installed before connecting input and output hoses.
- 5 Bleed fluid/gas pressure from system before servicing reel.
- 6 Before connecting reel to supply line ensure that pressure does not exceed maximum working pressure rating of reel.
- 7 Remember, even low pressure is very dangerous and can cause personal injury or death.
- 8 If a leak occurs in the hose or reel, remove system pressure immediately.
- 9 Ensure that reel, hose, and equipment being service are properly grounded.
- 10 If reel ceases to unwind or rewind, remove system pressure immediately.
- 11 Do not pull or jerk on hose.

WARNING

Exposure of skin directly to pressurized air, or fluids could result in severe bodily injury.

Technical Specifications

Max Pressure	Hose Working Temp (°C/ °F)	Hose Capacity		
		Material	I.D.	Length
300Psi (20Bar)	-20-60°C (-4-140°F)	NBR Rubber	3/4" / 19mm	8m/ 25ft



NSW
TEL: (02) 9939 0711
FAX: (02) 9939 0411

QLD/PNG
TEL: (07) 3204 9166
FAX: (07) 3204 1224

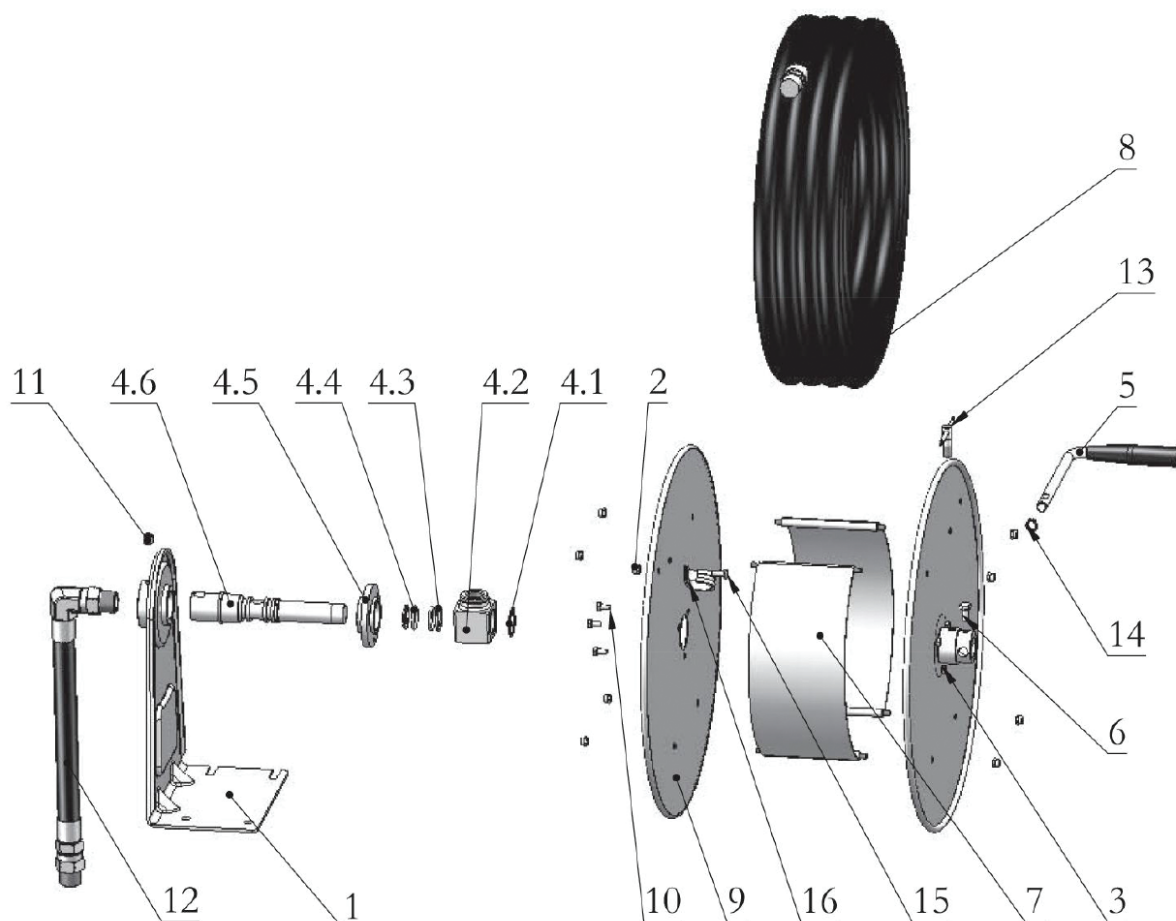
VIC/TAS
TEL: (03) 8787 8288
FAX: (03) 8787 8266

WA
TEL: (08) 9209 3066
FAX: (08) 9209 3933

SA/NT
TEL: (08) 8241 7111
FAX: (08) 8241 7011

NZ
TEL: (09) 447 1007
FAX: (09) 447 1008

Parts And Drawing Breakdown For The H19030/H19030C



Ordering Spare Parts

Parts List – Part No. H19030/H19030C

Part No.	Description	Q'ty	Part No.	Description	Q'ty
1	Base	1	7	Flange	2
2	Nut	9	8	Hose Assembly	1
3	Right Drum	1	9	Left Drum	1
4.1	Retainer	1	10	Screw	3
4.2	Swivel Body	1	11	Tighten Bolt	1
4.3	Retainer	2	12	Lead-in Hose Assembly	1
4.4	O-ring	2	13	Lock Pin	1
4.5	Connection Block	1	14	Retainer	1
4.6	Swivel Spool	1	15	Hose Clamp	1
5	Handle	1	16	Screw	1
6	Screw	1			

NSW
TEL: (02) 9939 0711
FAX: (02) 9939 0411

QLD/PNG
TEL: (07) 3204 9166
FAX: (07) 3204 1224

VIC/TAS
TEL: (03) 8787 8288
FAX: (03) 8787 8266

WA
TEL: (08) 9209 3066
FAX: (08) 9209 3933

SA/NT
TEL: (08) 8241 7111
FAX: (08) 8241 7011

NZ
TEL: (09) 447 1007
FAX: (09) 447 1008