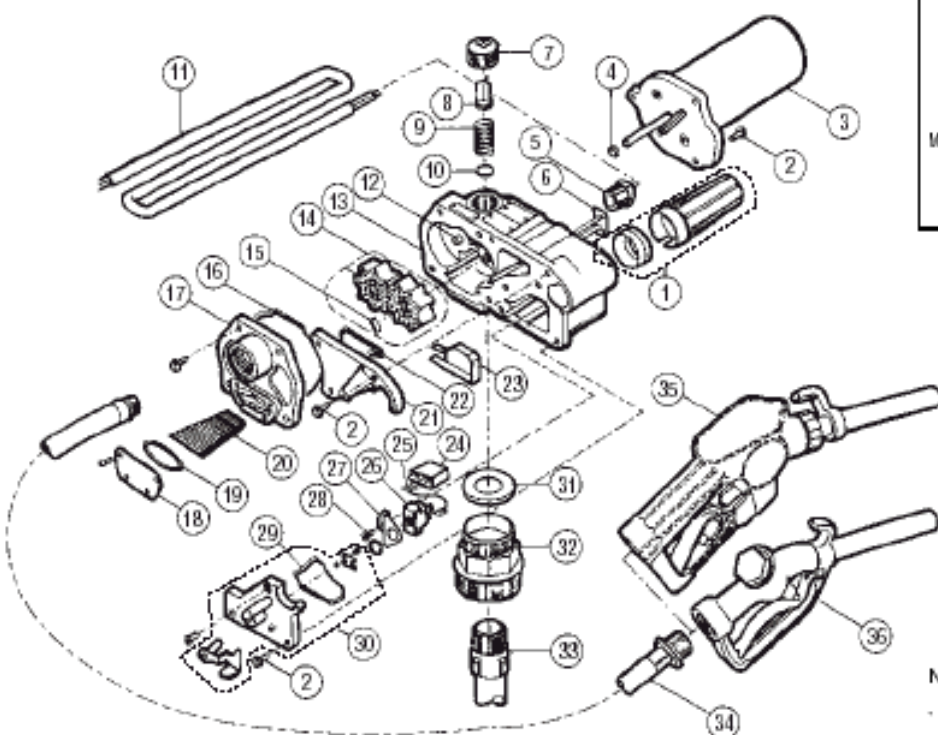
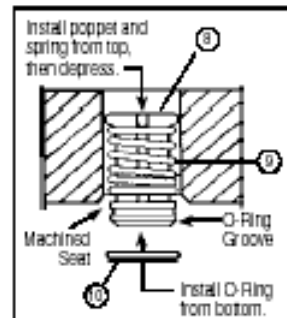


Fuel

Series M-150S, M-180S and M-240S 12-Volt and 24-Volt Electric Gear Pumps



Bypass Poppet Assembly View



Note: Consult factory before ordering replacement motors for older versions.

Item No.	Part No.	Description	No. Req'd
1	110902-1	Nozzle Cover Kit	1
2	904002-23	Sems Screw, 1/4-20 x 3/4 in.	8
3	119000-1	Motor, 12-volt (UL) (M-150S)	1
	119001-1	Motor, 12-volt (UL) (M-180S)	1
	119000-2	Motor, 24-volt (UL) (M-240S)	1
4	110025-1	Seal, Motor Shaft	1
5	904002-17	Strain Relief Sealing Grip (12-volt & 24-volt)	1
6	110039-1	Stopper (12-volt & 24-volt)	1
7	904001-42	Pipe Plug, 1/2 in.	1
8	110010-1	Bypass Poppet	1
9	110131-2	Spring, Bypass Poppet (except M-180S)	1
	110011-2	Spring, Bypass Poppet (M-180S)	1
10	110908-1	O-Ring, Bypass Poppet	1
11	110268-1	Power Cord, 12-volt, 12 ga. x 15 ft. (4.6m)	1
	110141-2	Power Cord, 24-volt, with Fuse and Battery Clamps, 12 ga. x 15 ft. (4.6m)	1
12	110019-1	Gear Shaft	1
13	110901-18	Pump Housing Kit (M-150S & M-240S)	1
	110901-17	Pump Housing Kit (M-180S)	1
14	110907-1	Gear Kit with Drive Key	1
15	110913-2	Drive Key Kit	1
16	110026-1	O-Ring, Gear Coverplate	1
17	110067-2	Gear Coverplate (M-150S-EM, M-150S, M-240S)	1
	110067-1	Gear Coverplate (M-180S)	1

Item No.	Part No.	Description	No. Req'd
18	110024-1	Coverplate, Strainer	1
19	110026-4	O-Ring, Strainer Coverplate	1
20	110009-1	Inlet Strainer	1
21	110031-1	Coverplate, Electrical	1
22	110026-2	O-Ring, Electrical Coverplate	1
23	110075-3	Barrier (M-150S & M-180S)	1
	110075-1	Barrier (M-240S)	1
24	902006-31	Motor Protector (M-150S)	1
	902006-38	Motor Protector (M-180S)	1
25	110191-1	Jumper Wire, 12-volt (M-150S & M-180S)	1
26	110910-1	Switch Kit, 12-volt & 24-volt	1
27	110162-3	Switch Mounting Plate	1
28	904002-20	Sems Screw, 6-32 x 1/4 in.	1
29	110026-6	Seal, Switch Coverplate	1
30	110164-1	Switch Coverplate Assembly	1
31	110032-1	Gasket, Union Ring	1
32	110909-1	Bung Adapter Kit	1
33	110100-1	Suction Pipe Assembly	1
34	110049-2	Hose, 3/4 in. x 12 ft. (3.7m) (UL)	1
	121036-1	Hose, 1 in. x 12 ft. (3.7m) (UL) (M-180S only)	1
35	110121-8	Nozzle, Automatic 3/4 in., Unleaded (UL)	1
36	906002-13	Nozzle, Manual 3/4 in., Unleaded (UL)	1
	906001-10	Nozzle, Manual 1 in., Leaded (UL)	1
	110182-1	Inlet Fitting (M-150S-EM) not shown	1

Kits and Accessories

110604-3	Overhaul Kit - Wet Seal Kit plus 2 gears; drive key; O-Rings for switch and electrical coverplates.
110906-1	Wet Seal Kit - Motor shaft seal and O-Rings for: strainer coverplate; gear coverplate; bypass poppet.
110217-2	Fuse and Holder, 24-volt, 12 amp.
110627-1	Battery Clamp Kit
906001-4	Pressure Vent Cap (3 psi)

110524-1	Armature Assembly (M-150S)
110524-2	Armature Assembly (M-240S)
110525-1	Brush Card Assembly (M-150S & M-240S)
111501-1	Meter Mount Kit
110016-1	Inlet Fitting
110168-1	Union Ring
110929-01	Power Cord Kit, 22 ft.