

DESCRIPTION

Model 30091 is suitable for extracting the engine oil from any motor vehicle by suction hose with the probes.

Waste oil suction is carried out by an air operated vacuum pump with no moving and no worn parts, putting a probe or connector inserted into the motor oil level gauge. A suction hose, rubber handle and a set of connectors and probes are also included.

The 12L transparent chamber allows the quantity and quality of the sucked oil to be reviewed and controlled immediately.

The unit comes complete with a 80L capacity reservoir and includes a tyre gauge and a safety valve to avoid over pressure.

SPECIFICATIONS

Uses	Extracts and captures waste oil from crankcases, transmissions and differentials
Tank Capacity	Holding tank capacity of 80 litres
Draining Pressure	14psi

WARNING

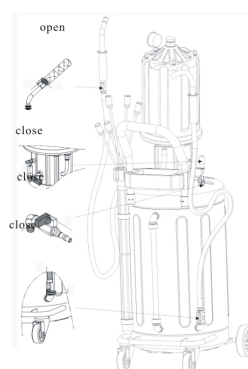
Do not extract caustic or flammable products.
Do not expose the reservoir to any source of heat.
While extracting high temperature oils, keep hands and face protected .
Only use the device for the purpose for which it has been designed.
Do not modify any components of the equipment.
Only use original spare parts.
Our technical office is at you full disposal for any information you may need.

OPERATING INSTRUCTIONS

Setting up for the oil suction

Close the valve #0014
Close the valve #0051
Close the valve #0060
Open the valve #0044

Connect shop air (8 bar) to vacuum pump male adapter(#0021), air will flow through the muffler until the gauge approaches the red field (after 2.5-3min). Disconnect the shop air. The unit is now depressurised and ready for use. (Fig 1)



(Fig 1)



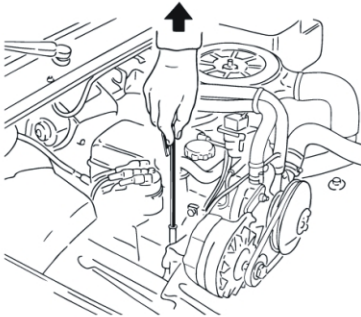
Operation

Oils should always be removed from their reservoirs when hot.
The suction capacity of the unit is equal to 2/3 of its reservoir capacity.

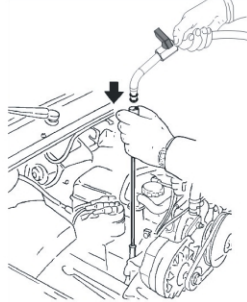
With the engine still warm, remove the dipstick and insert the largest possible probe as far down as it will go.(Fig 2)

Connect the suction hose to the probe. (Fig3)

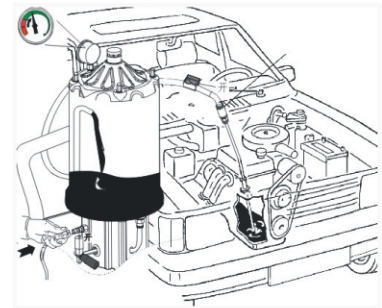
Open the ball valve on the suction hose , the oil is sucked from the sump into the graduated transparent chamber where it can be inspected for quantity and quality. As soon as the sump is emptied, close ball valve (Fig 4).



(Fig 2)



(Fig 3)



(Fig 4)

Emptying the Reservoir

Close the valve #0014

Close the valve #0060

Open the valve #0051

Open the valve #0044

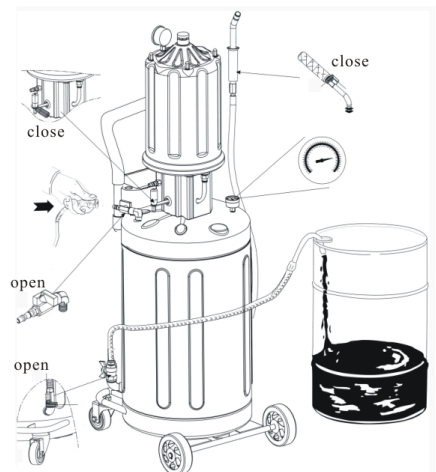
Before draining the oil, close the ball valve (#0014, #0060).

Attach the end of the drain hose to a suitable waste oil container.

Connect (0,5Bar) shop air to quick plug (#0052) and open the ball valve (#0051) and open ball valve (#0044). (Fig 5)

After the fluids have been transferred from the unit's reservoir tank, close ball valve (#0044).

The unit is equipped with a pneumatic safety relief valve that has been factory calibrated at 1 bar(14 PSI).

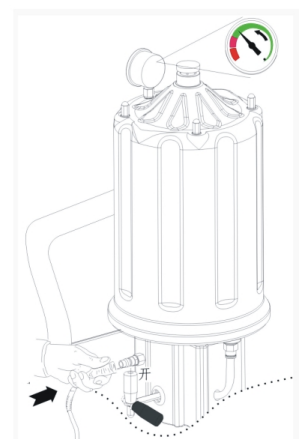


(Fig 5)

There are two ways to use the equipment:

1. After activation close ball valve (#0014), the oil will be sucked by using only the vacuum of the transparent reservoir. In this way it is possible to suck about 12L (2/3 of the transparent chamber capacity.)

Open the valve (#0014), the oil is immediately drained into the tank and in the meantime, the vacuum from the reservoir, will make the transparent chamber ready for another operation. (Fig 6)



(Fig6)

NSW
TEL: (02) 9939 0711
FAX: (02) 9939 0411

QLD/PNG
TEL: (07) 3889 8480
FAX: (07) 3889 8490

VIC/TAS
TEL: (03) 8787 8288
FAX: (03) 8787 8266

WA
TEL: (08) 9209 3066
FAX: (08) 9209 3933

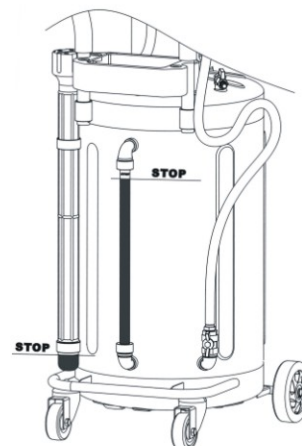
SA/NT
TEL: (08) 8241 7111
FAX: (08) 8241 7011

NZ
TEL: (09) 447 1007
FAX: (09) 447 1008

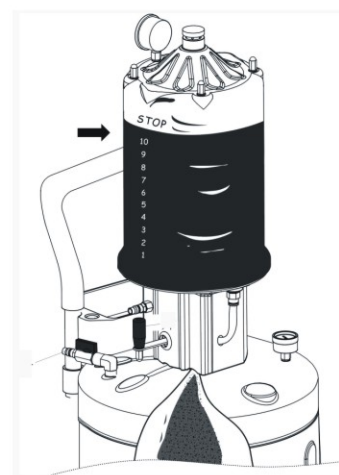
2. It's also possible to suck oil keeping the air hooked up to the device. In this case, before draining the oil from the transparent reservoir, valve (#0014) must be open.

CAUTION:

1. Never fill the reservoir over the maximum level indicated by the level gauge (#0030) that is located on the side of the reservoir.
2. Do not fill the waste oil cup full. (#0045). (Fig7)
3. Do not fill the transparent chamber over the "Stop" mark (#0005) (Fig8)



(Fig 7)



(Fig 8)

NSW
TEL: (02) 9939 0711
FAX: (02) 9939 0411

QLD/PNG
TEL: (07) 3889 8480
FAX: (07) 3889 8490

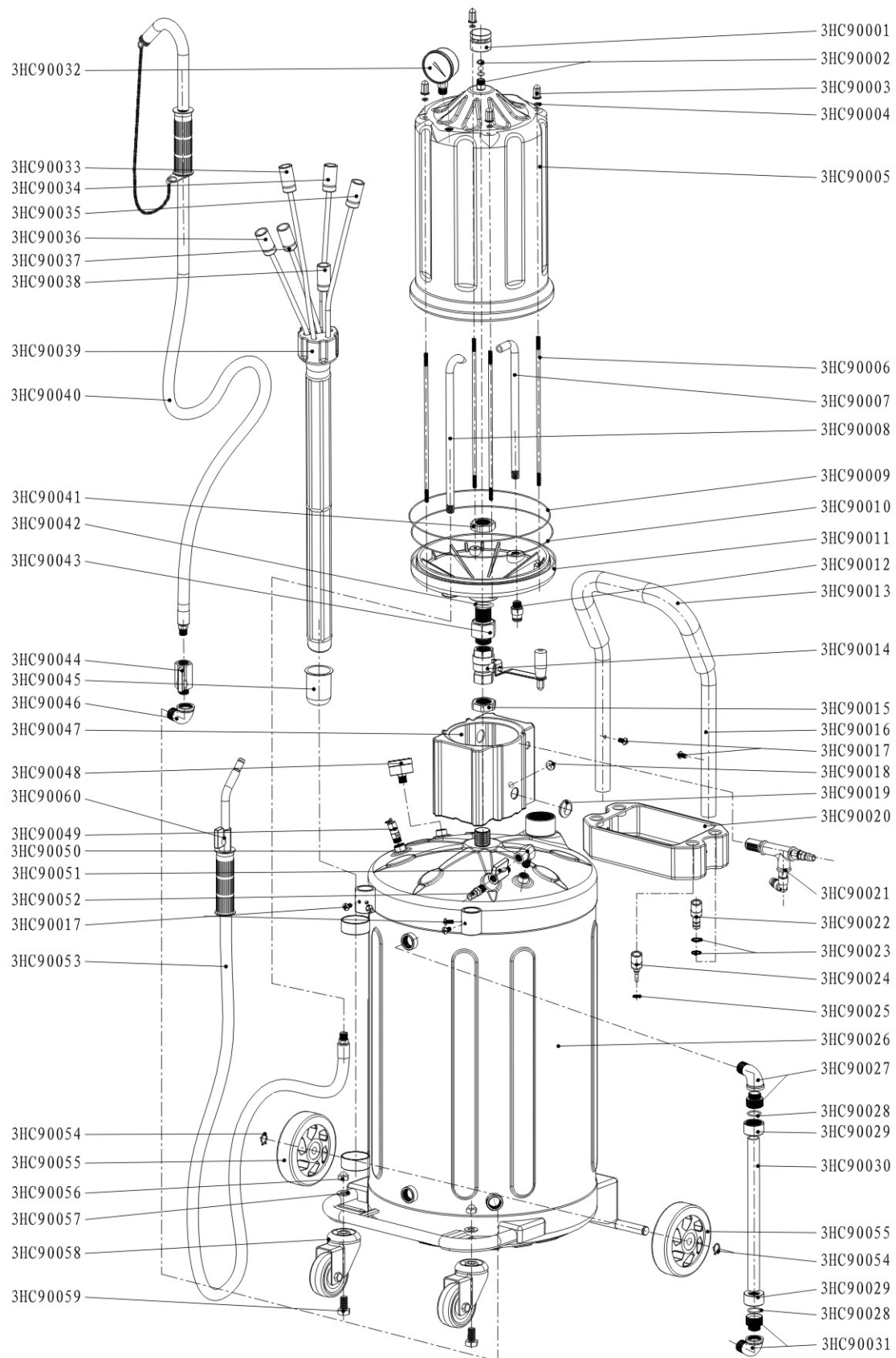
VIC/TAS
TEL: (03) 8787 8288
FAX: (03) 8787 8266

WA
TEL: (08) 9209 3066
FAX: (08) 9209 3933

SA/NT
TEL: (08) 8241 7111
FAX: (08) 8241 7011

NZ
TEL: (09) 447 1007
FAX: (09) 447 1008

Parts and Drawing Breakdown For The 30091



NSW
TEL: (02) 9939 0711
FAX: (02) 9939 0411

QLD/PNG
TEL: (07) 3889 8480
FAX: (07) 3889 8490

VIC/TAS
TEL: (03) 8787 8288
FAX: (03) 8787 8266

WA
TEL: (08) 9209 3066
FAX: (08) 9209 3933

SA/NT
TEL: (08) 8241 7111
FAX: (08) 8241 7011

NZ
TEL: (09) 447 1007
FAX: (09) 447 1008

Ordering Spare Parts

Parts List – Part No. 30091

Item	Description	quantity	Item	Description	quantity
3HC90001	valve cup	1	3HC90031	level gauge adapter 3	1
3HC90002	anti-explosion valve	2	3HC90032	vacuum meter	1
3HC90003	nut	5	3HC90033	probe 5x700 flexible	1
3HC90004	Level Gauge	4	3HC90034	probe 5x700 metal	1
3HC90005	chamber	1	3HC90035	probe 6x700 flexible	1
3HC90006	chamber rod	1	3HC90036	probe 6x700 metal	1
3HC90007	vacuum tube	1	3HC90037	probe 7x1000 flexible	1
3HC90008	suction oil tube	1	3HC90038	probe 8x700 flexible	1
3HC90009	o-ring	1	3HC90039	suction oil tube	1
3HC90010	o-ring	1	3HC90040	drainer hose	1
3HC90011	chamber base	1	3HC90041	nut	1
3HC90012	plug	1	3HC90042	o-ring	1
3HC90013	handle sleeve	1	3HC90043	chamber swivel adapter	1
3HC90014	ball valve	1	3HC90044	ball valve	1
3HC90015	nut	1	3HC90045	waste oil cap	1
3HC90016	handle	1	3HC90046	adapter	1
3HC90017	screw	6	3HC90047	plastic cover	1
3HC90018	protection cup	1	3HC90048	gauge	1
3HC90019	protection cup	1	3HC90049	safety valve	1
3HC90020	tool troy	1	3HC90050	adapter	1
3HC90021	vacuum pump	1	3HC90051	ball valve	1
3HC90022	connector for probes (Volkswagen)	1	3HC90052	plug	1
3HC90023	o-ring	2	3HC90053	suction tube	1
3HC90024	connector for probes (BMW)	1	3HC90054	clamp	2
3HC90025	o-ring	1	3HC90055	wheel	2
3HC90026	reservoir	1	3HC90056	nut	2
3HC90027	level gauge adapter 1	1	3HC90057	washer	2
3HC90028	o-ring	2	3HC90058	castor	2
3HC90029	screw	2	3HC90059	threader rod	2
3HC90030	Level Gauge	1	3HC90060	ball valve	1

NSW
TEL: (02) 9939 0711
FAX: (02) 9939 0411

QLD/PNG
TEL: (07) 3889 8480
FAX: (07) 3889 8490

VIC/TAS
TEL: (03) 8787 8288
FAX: (03) 8787 8266

WA
TEL: (08) 9209 3066
FAX: (08) 9209 3933

SA/NT
TEL: (08) 8241 7111
FAX: (08) 8241 7011

NZ
TEL: (09) 447 1007
FAX: (09) 447 1008