

## Oxy Propane Hose Reel

### Description

The new SOP620 Oxy Propane hose reel from Alemlube is a genuine industrial quality welding reel ideal for all general welding applications undertaken by contractors, fabricators and people involved in the construction and industrial fields. Featuring impact resistant UV stabilised covers for maximum durability and an automatic and positive latching mechanism, the SOP620 can easily be mounted on the wall or ceiling and can be carried in utes and service vehicles.

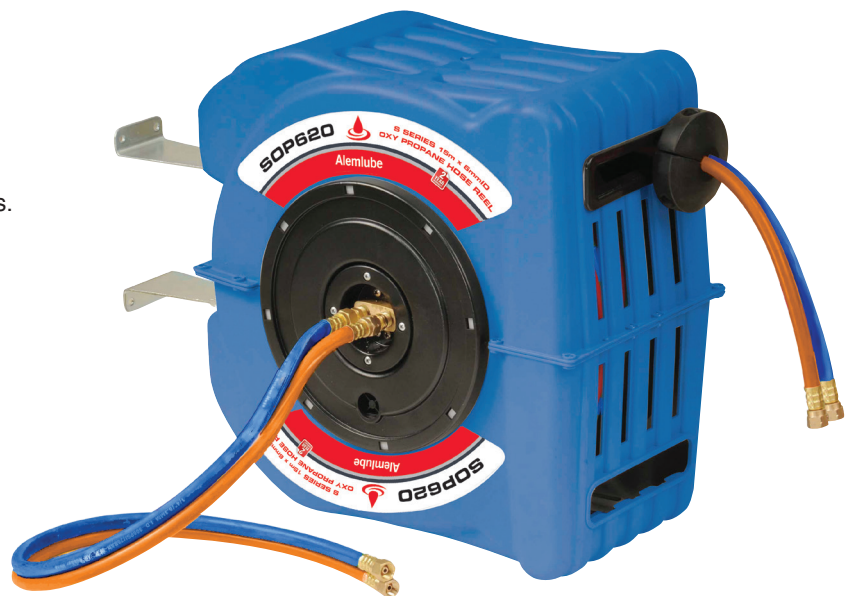
### Specifications

Uses	Oxy Propane welding
Hose Length	15m x 6mm ID twin rubber hoses and 0.9 lead in hoses
Materials	Plastic UV stabilised cover & steel spring
Pressure	300 psi (20 bar)
Dimensions	630mm (L) x 442mm (H) x 261mm (W)
Inlet/Outlet	Lead in hose: 5/8" UNF (f) fitting
Working Temp	-30°C ~ 60°C

### Installation Of Reel

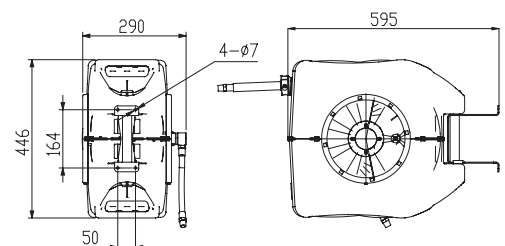
- 1 Prior to mounting the hose reel, ensure that the supply line pressure does not exceed the maximum working pressure of the hose reel.
- 2 Unpack and inspect the reel for damage. Turn by hand to check for smooth operation. Check for completeness.
- 3 For overhead ceiling mounting: Install reel at most 10ft/3m above the floor.
- 4 You will need to purchase appropriate hardware for mounting your new reel.
  - 1) The base has four 6.5mm drill holes for mounting on a suitable flat surface.
  - 2) Using the four holes in the base, mount the reel in the desired location.

Be sure to use appropriate hardware and tighten securely.



### Operation

- 1 Check your S Series reel for correct operation by slowly pulling out the hose. A clicking noise will be heard every half revolution of the drum.
- 2 Latching mode switch, when your S Series reel is in free run state, pull out the hose and allow it to retract after hearing the first, second or third click.
- 3 To unlatch the reel, slowly pull out the hose until the clicking noise stops, and then let the hose retract until the hose stop rests against the hose guide.
- 4 If necessary, adjust spring tension on reel by adding or removing wraps of hose from spool, one wraps at a time, until desired tension is obtained. Add wraps to increase tension. Remove wraps to decrease tension.

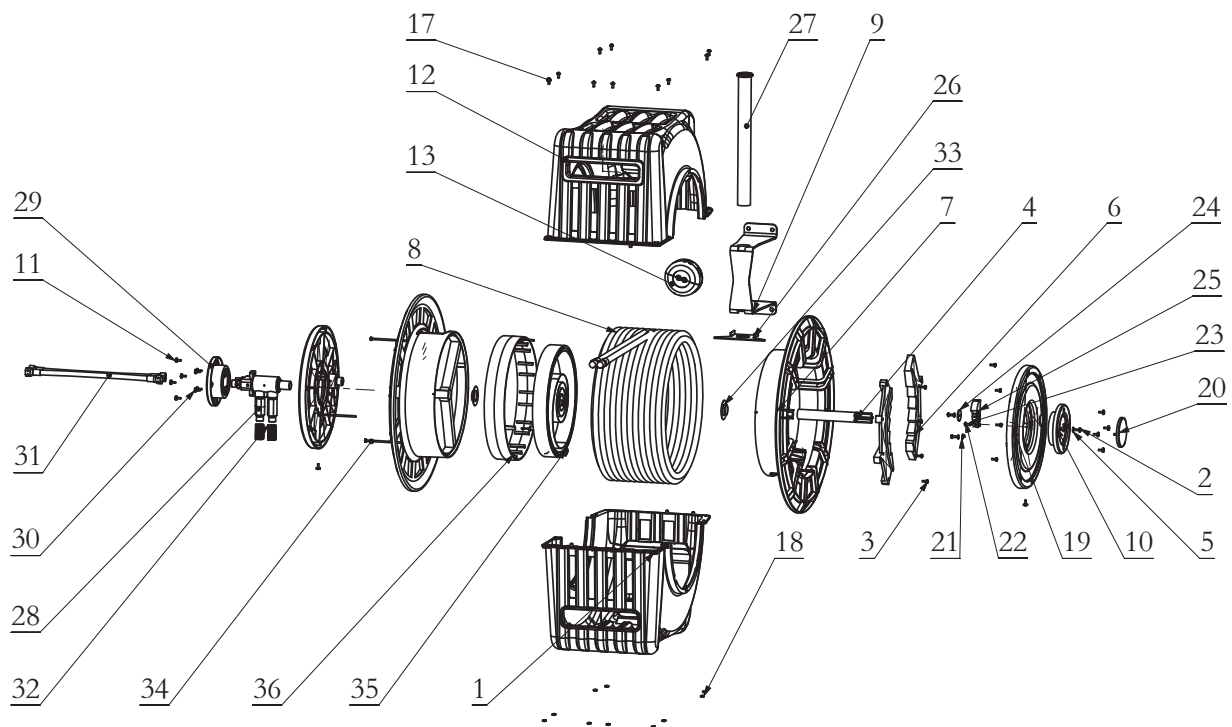


### Warning

1. Make sure the hose is in proper working order.
2. Clean the hose with a cloth dipped in hot water to remove dirt or deposits and ensure correct rewinding.
3. Do not use detergents or solvents which could prove incompatible with cable-winder materials.
4. Dismantling of the unit by unskilled person could prove hazardous: the risk involved mainly concern the preloaded springs.



# Parts and Drawing Breakdown For SOP620 Hose Reel



## Ordering Spare Parts SOP620 Spare Parts List

Item No.	Part No.	Description	QTY	Item No.	Part No.	Description	QTY
1	SOP620-1	Casing	2	21	SOP620-21	Ratchet Spring	1
2	SOP620-2	Screw	3	22	SOP620-22	Screw	3
3	SOP620-3	Screw	8	23	SOP620-23	Washer	3
4	SOP620-4	Main Axle	1	24	SOP620-24	Clip for Ratchet	1
5	SOP620-5	Washer	1	25	SOP620-25	Ratchet	1
6	SOP620-6	Ratchet Ring	2	26	SOP620-26	Stator	1
7	SOP620-7	Drum	2	27	SOP620-27	Axle	1
8	SOP620-8	Hose assembly	1	28	SOP620-28	Swivel assembly	1
9	SOP620-9	Bracket	1	29	SOP620-29	Cover for spool	1
10	SOP620-10	Cover for Axle	1	30	SOP620-30	Screw	4
11	SOP620-11	Screw	8	31	SOP620-31	Inlet hose assembly	1
12	SOP620-12	Guide Protector	1	32	SOP620-32	Spring Protector for hose	2
13	SOP620-13	Hose stop assembly	1	33	SOP620-33	Washer	2
17	SOP620-17	Screw	10	34	SOP620-34	Screw	3
18	SOP620-18	Nut	10	35	SOP620-35	Main Spring	1
19	SOP620-19	Big cover	2	36	SOP620-36	Clamp of main spring	1
20	SOP620-20	Small cover	1				

NSW  
TEL: (02) 9677 1555  
FAX: (02) 9675 1155

QLD/PNG  
TEL: (07) 3204 9166  
FAX: (07) 3204 1224

VIC/TAS  
TEL: (03) 8787 8288  
FAX: (03) 8787 8266

WA  
TEL: (08) 9302 4199  
FAX: (08) 9303 2095

SA/NT  
TEL: (08) 8241 7111  
FAX: (08) 8241 7011

NZ  
TEL: (64) 9 447 1007  
FAX: (64) 9 447 1008