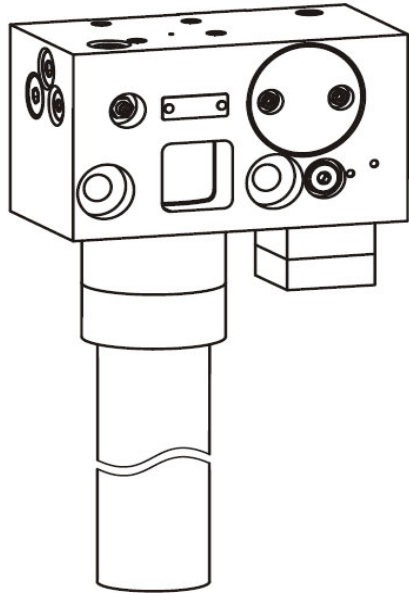


BEKA HAMAX 2 HYDRAULIC GREASE PUMP

1.1 HAMAX 2 GREASE PUMP



APPLICATIONS

For installation directly onto hydraulic hammers to lubricate the bushing.
HAMAX2 tees into the main hydraulic pressure and return lines and operates each time the hammer is used. A flow control valve regulates the cycle speed of the pump.
Various types of grease cartridges and adaptors are available as accessories.
Connects via flange or by hoses.

SPECIFICATIONS

Operation:	Hydraulic
Max hydraulic input pressure:	90 - 250 Bar
Max hydraulic back pressure:	20 Bar
Max hydraulic flow:	2 lpm
Default cycle speed:	14 cycles/min
Grease flow rate:	0.12cc/cycle
Max grease pressure:	280 Bar (by relief valve)
Connections:	1/4"BSP or flange

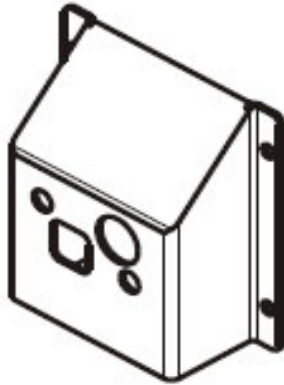
MODEL NUMBER*

25760110202*	HAMAX2 PE-120FH Type S and EP2 cartridge incl mounting hardware	\$2,970.00
--------------	---	------------

OPTIONS

With adjustable pumping element PE-120VH	ADD	\$121.00
*See the HAMAX2 catalog for full details on the model codes and options.		

1.2 HAMAX2 PUMP PROTECTION PLATE KIT



APPLICATIONS

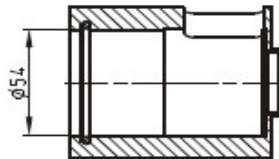
Made of pressed steel the plate protects the pump from damage.

MODEL NUMBER

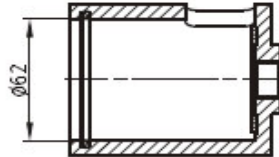
25760002	Protection kit (incl mounting bolts)	\$ 313.60
----------	--------------------------------------	-----------

1.3 HAMAX2 CARTRIDGE ACCESSORIES

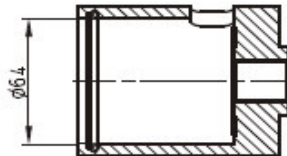
Adapter 2576GK0001 - for cartridge Type S:



Adapter 2576GK0002 - for cartridge Type F:



Adapter 2576GK0003 - for cartridge Type L:



APPLICATIONS

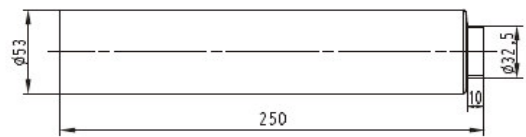
The three types adaptors allow different types of cartridges to be used.
The adaptors are fitted into the HAMAX2 pumps with socket head screws.

MODEL NUMBER

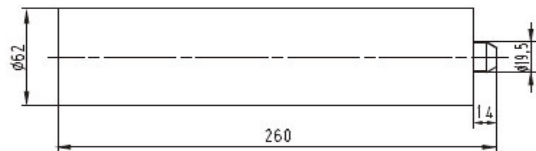
2576GK0001	Adaptor for Type S 54mm diam	\$ 202.00
2576GK0002	Adaptor for Type F 62mm diam	\$ 202.00
2576GK0003	Adaptor for Type L 64mm diam	\$ 180.00

1.4 HAMAX2 CARTRIDGES

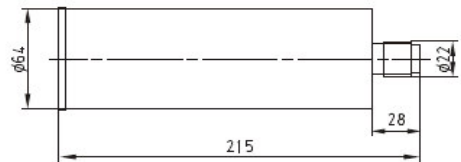
Type S - BEKA standard:



Type F:



Type L:



APPLICATIONS

Several types of cartridges can be supplied according to the needs of the hammer.

MODEL NUMBER

0320090	Copper paste Type F	\$ 61.60
0320091	Copper paste Type S	\$ 43.00
0320092	EP2 grease Type S	\$ 28.00