



OWNER'S MANUAL

600A

Lever Action Grease Gun

June 2022

Description

The 600A manufactured in Germany, is a lever action 450g grease gun capable of generating up to 12,000 psi. It comes standard with a 16.5cm rigid extension & 4 jaw coupler for lubricating points. It has a 600g bulk grease capacity & comes with 4 year warranty. Furthermore, the patented Ever-Flow System enables the gun to be used even with most thick, tacky greases up to NLGI3.

Specifications

Uses	450g Grease Cartridges, Suction loading, Bulk loader pump from bulk grease drum.
Pressure Capabilities	Up to 12,000psi grease pressure
Delivery	1.6cc per stroke

Operating Instructions

There are two ways to fill the gun with grease:

A: 450g Grease Cartridge:

Unscrew the grease barrel from the gun and insert the 450g grease cartridge by holding the barrel assembly and pulling the rod back. Remove cap from the grease cartridge, insert the cartridge into the barrel and then rescrew the barrel assembly back onto the gun so that the cartridge sits well against the follower cup. Once in position, press the clamp down & push the rod firmly back into the barrel.

Important To Note:

When using the gun with a cartridge, the follower cup must be folded back. The gun is supplied standard with the follower cup in this position.

B: Bulk Grease Loading:

Unscrew the grease barrel from the gun head & insert the barrel into the bulk grease. Suck the grease up into the barrel by pulling the rod all the way back. When barrel is full with grease, rescrew the barrel assembly back onto the gun head so that the follower sits well against the grease. Press the clamp down & push the rod firmly back into the barrel.

Important To Note:

When using the gun with bulk grease, the follower cup must be folded forward. To do this, take the follower cup and rod assembly out of the barrel, fold the follower cup forward and reassemble the barrel assembly.

Maintenance

Cleaning: always keep the follower cup free of impurities. Your grease should be clear of any foreign particles, dirt etc and the gun should be checked and cleaned regularly.

Trouble Shooting

Air Pocked In Grease: If the gun is pumped but no grease appears from the coupler:

Depress the air bleeder valve on the head and pump a few strokes.

Unscrew the barrel assembly from the gun head with two or three turns and then push on the plunger rod. With the follower cup engaged the follower cup will move further down into the barrel venting any trapped air out through the thread connections between the barrel and head. Unscrew the rigid extension as well.

Safety Warning

Always use safety goggles and gloves when operating this grease gun. Personal injury may occur and if so seek immediate medical attention. Do not use a high pressure grease fitting as a loader fitting. Excessive pressure can cause personal injury and equipment damage.



NSW/ACT
TEL: (02) 9677 1555
FAX: (02) 9675 1155

QLD/PNG
TEL: (07) 3204 9166
FAX: (07) 3204 1224

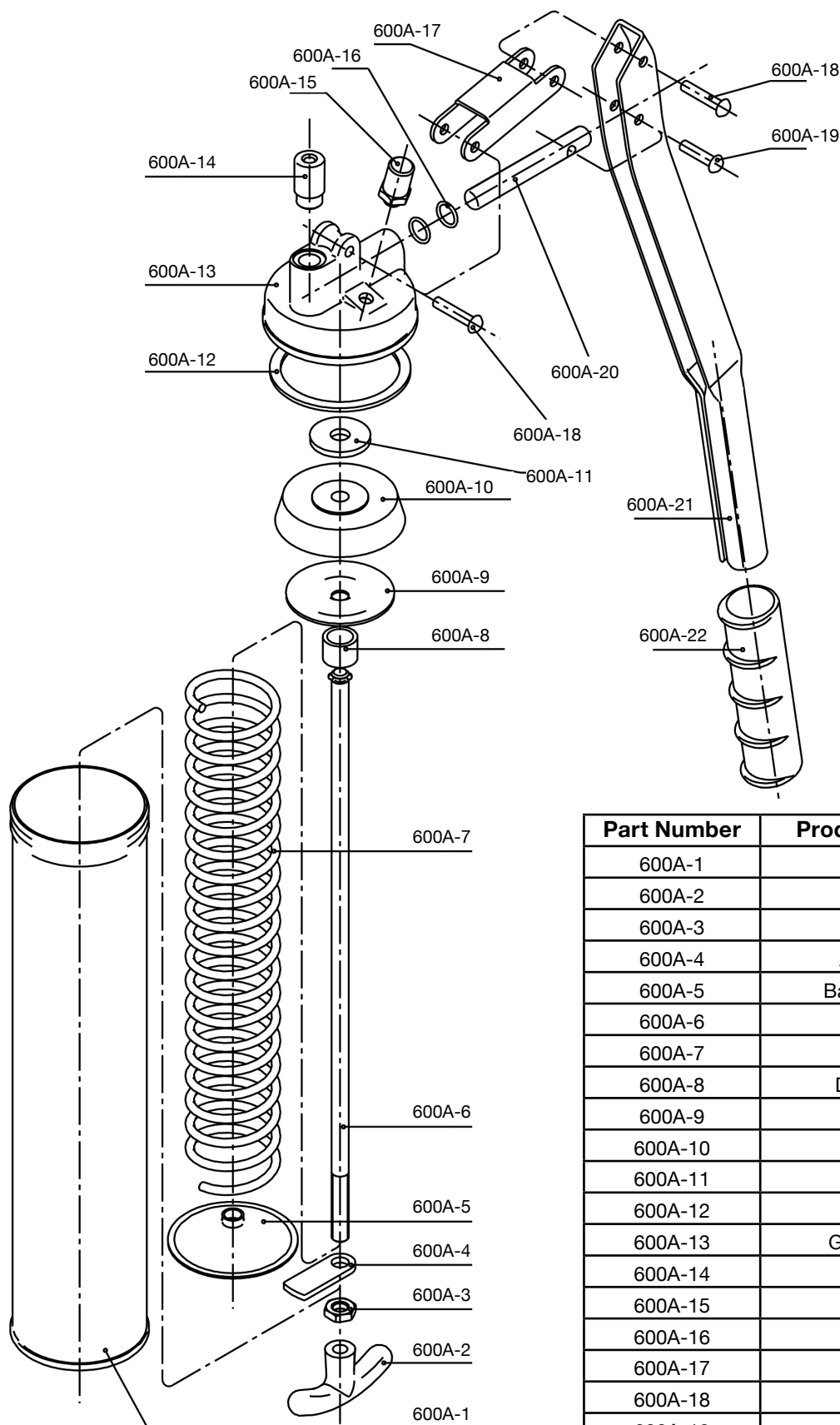
VIC/TAS
TEL: (03) 8787 8288
FAX: (03) 8787 8266

WA
TEL: (08) 9302 4199
FAX: (08) 9303 2095

SA/NT
TEL: (08) 8241 7111
FAX: (08) 8241 7011

NZ
TEL: (09) 447 1007
FAX: (09) 447 1008

Parts and Drawing Breakdown for 600A



Ordering Spare Parts

Parts List – Model 600A

Part Number	Product Description	Quantity
600A-1	Barrel	1
600A-2	T-grip handle	1
600A-3	Hex nut	1
600A-4	Arrester clamp	1
600A-5	Barrel cover insert	1
600A-6	Draw rod	1
600A-7	Spring	1
600A-8	Distance holder	1
600A-9	Forming disc	1
600A-10	Follower cup	1
600A-11	Washer	1
600A-12	Ring	1
600A-13	Grease gun head	1
600A-14	outlet	1
600A-15	Filler nipple	1
600A-16	O ring	2
600A-17	U strap	1
600A-18	Rivets	2
600A-19	Rivets	1
600A-20	Piston	1
600A-21	Lever	1
600A-22	Black handle grip	1
600A-HA	Head Assembly Complete	1

NSW/ACT

TEL: (02) 9677 1555

FAX: (02) 9675 1155

QLD/PNG

TEL: (07) 3204 9166

FAX: (07) 3204 1224

VIC/TAS

TEL: (03) 8787 8288

FAX: (03) 8787 8266

WA

TEL: (08) 9302 4199

FAX: (08) 9303 2095

SA/NT

TEL: (08) 8241 7111

FAX: (08) 8241 7011

NZ

TEL: (09) 447 1007

FAX: (09) 447 1008