



OWNER'S TECHNICAL MANUAL

20040N

LED Work Light

Description

20040N LED Work Light is the ideal workshop portable light source due to its low heat output, constant brightness, high shock resistant TPE and PC housing. The 20040N LED features 1*3W COB high power super bright for large area light emission. It has the indicator for the battery state. For convenient hands free use the additional benefits of a magnetic base and a 360° fold away hanging hook.

Specifications

Charger	AC 100~240V 50/60Hz
Voltage / Current	DC 5V/1A
Battery	3600mAh Lithium-ion
Charging time	≤4h
Discharging time	≥4.5h
Luminous flux	230-250lm

Features

Portable, rechargeable work light - take it with anywhere
1*3W COB high power super bright for large area light emission
Strong magnet in the bottom for parallel or multi-angle use
1 rear hook enable mounting for under-hood & under-car applications
Includes both straight charger and in-car charger for added convenience

Battery treatment/charging:

2 green indicator lights alternatively flash: charging, electricity is lower than 50%
1 green indicator light constantly on, the other is flashing: charging, electricity is more than 50%
2 green indicator lights constantly on: charging completed
Do not leave battery in full discharged condition
Recharge the work light at least once in every 30 days

Warning & Safety Issues:

Red indicator light constantly on when the light is on: It is time for charging.
Avoid looking directly into the beam
Do not use the lamp near open flames



NSW
TEL: (02) 9939 0711
FAX: (02) 9939 0411

QLD/PNG
TEL: (07) 3204 9166
FAX: (07) 3204 1224

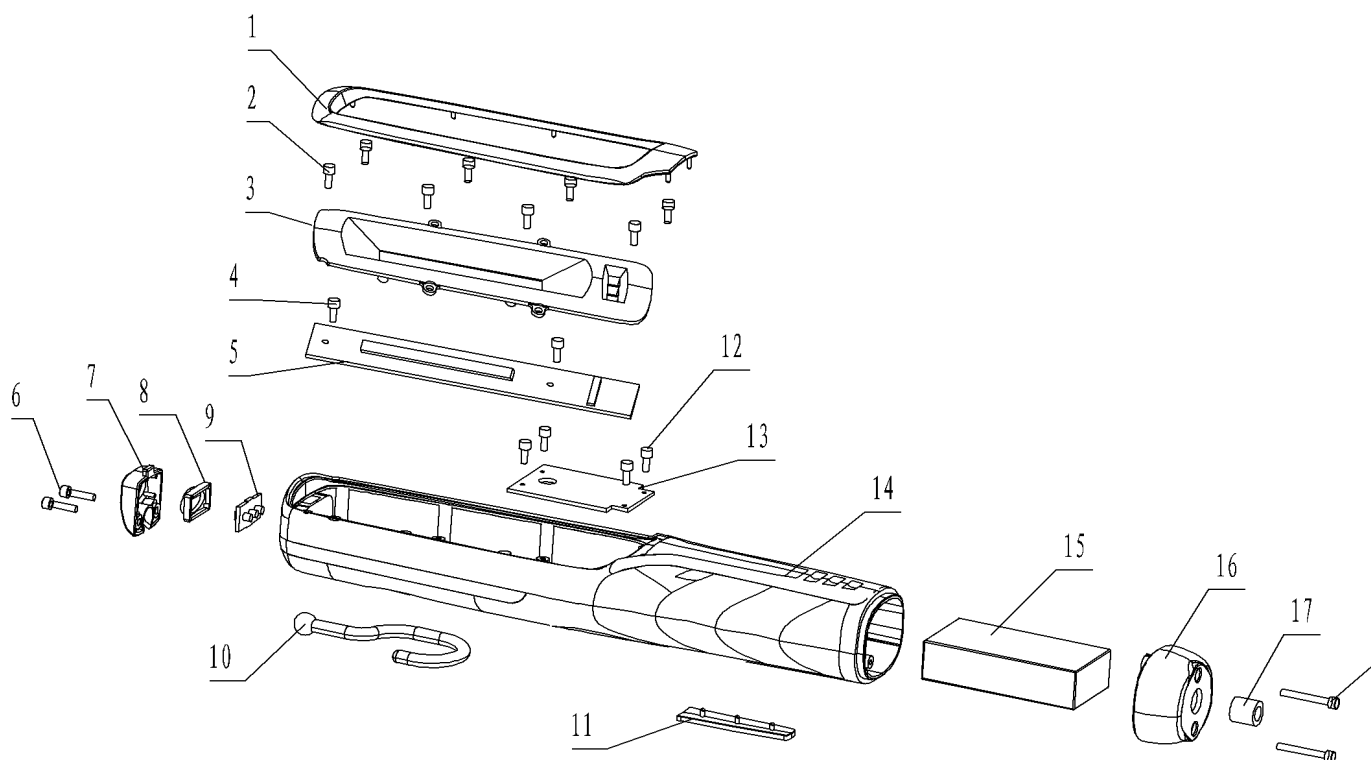
VIC/TAS
TEL: (03) 8787 8288
FAX: (03) 8787 8266

WA
TEL: (08) 9302 4199
FAX: (08) 9303 2095

SA/NT
TEL: (08) 8241 7111
FAX: (08) 8241 7011

NZ
TEL: (09) 447 1007
FAX: (09) 447 1008

Parts And Drawing Breakdown For The 20040N



Ordering Spare Parts. Parts List – Part No. 20040N

NUMBER	PART NAME	MATERIAL	NUMBER	PART NAME	MATERIAL
20040N-1	Ornament	ABS	20040N-11	Logo Plate	PP
20040N-2	Reflector Screw	M2.5*6	20040N-12	Control Panel Screw	M2.5*6
20040N-3	Baby Reflector	ABS	20040N-13	Control Panel	FR4
20040N-4	PCB Screw	M2.5*6	20040N-14	Light Body	TPR+PP
20040N-5	LED Light Plate	Ai Plate	20040N-15	Battery	Lithium-ion
20040N-6	Platen Screw	M3*6	20040N-16	Bottom Cover	TPR+PP
20040N-7	Hook Platen	PP	20040N-17	DC Socket	
20040N-8	Spot Light Transparent Cover	PC	20040N-18	Bottom Cover Screw	M2.5*6
20040N-9	Spot Light PCB	Ai Plate			
20040N-10	Hoot	PC			

NSW
TEL: (02) 9939 0711
FAX: (02) 9939 0411

QLD/PNG
TEL: (07) 3204 9166
FAX: (07) 3204 1224

VIC/TAS
TEL: (03) 8787 8288
FAX: (03) 8787 8266

WA
TEL: (08) 9302 4199
FAX: (08) 9303 2095

SA/NT
TEL: (08) 8241 7111
FAX: (08) 8241 7011

NZ
TEL: (09) 447 1007
FAX: (09) 447 1008